

Hālāwai Ho‘olauna

Three decorative square panels are positioned behind the text. The left panel is brown with a white pattern of stylized, branching lines. The middle panel is blue with a white pattern of stylized, branching lines. The right panel is green with a white pattern of stylized, branching lines and raindrops.

16 IULAI 2024

PAPA MANAWA

5:00 Welina & ‘Oli

5:10 Mission/Vision

Ho’olauna Limahana

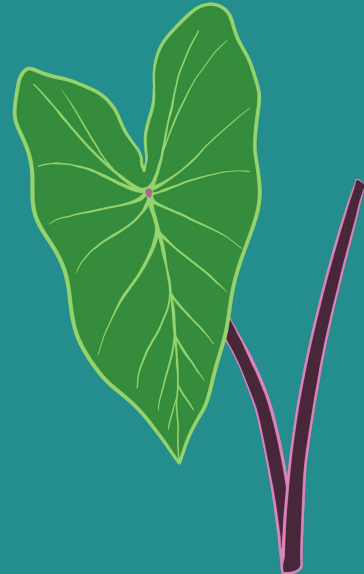
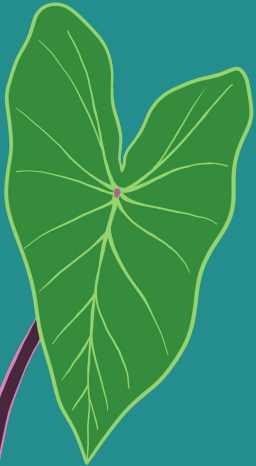
5:30 ‘Ohana Expectation & Handbook

6:00 Safety

6:15 Academic Program & Ho’opākela

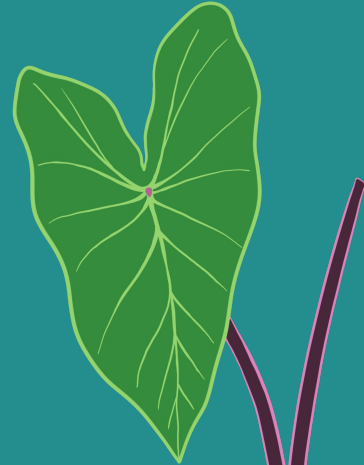
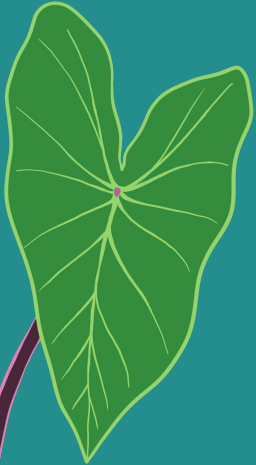
6:30 Stakeholders: GB, NHM, & SLK

6:45 Panina



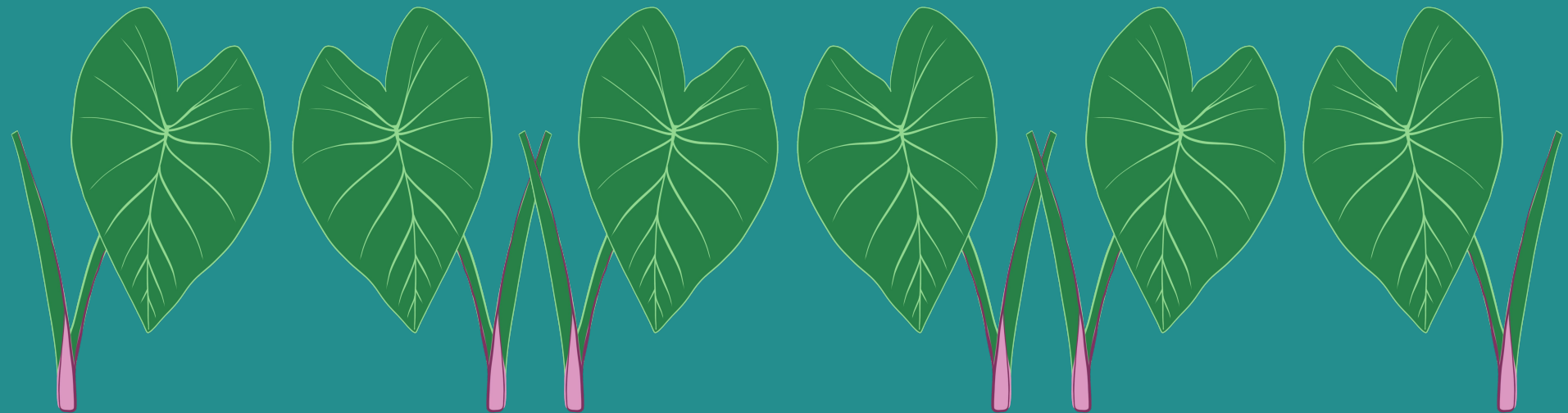
HŌ MAI KA WA‘A

Hō mai ka wa‘a, ‘ili ni‘i i nā ‘ale
Nā ‘ale kua loloa o Ka‘ie‘ie
‘Au ‘o Hā‘upu i ke alo Aopua‘a
Ho‘olono i ke a‘a no Kalanipu‘u
Lani nu‘u Paka-‘āwili-lau-‘ili-lua
Ala‘oli kau kolo iā ‘Ale koko kuapapa
E pā mai ka lā, ha‘alili i ka maka
E pā mai ka ‘Oni, ua ‘oni pa‘a ‘ē
Ka‘ika‘i ‘ia ka leo, he komo ē
E heahea mai ka leo, he kāhea ē



Aloha!

Ē NĀ 'ŌHANA O KAWAIKINI



Ke Ala Nu'ukia *Mission*

Me ka pa'a ma ka 'ike kūpuna ma ka 'ōlelo Hawai'i, e mālama ai ke kula 'o Kawaikini (M-12) i kaiapuni kāko'o a i kaiapuni a'o, ma ka 'ōlelo Hawai'i a me ka 'ōlelo Pelekānia nō ho'i, kahi e minamina, ho'ohana, a ho'omau 'ia ai nō ho'i ka 'ike ku'una 'ōiwi*.

Grounded in the Hawaiian language, Kawaikini NCPCS will create a productive community of bilingual and biliterate citizens in a supportive K-12 learning environment where indigenous cultural knowledge is valued, applied, and perpetuated.

Nā Pahuhopu *Goals*



- To create and implement an integrated K-12 Kauai-based curriculum.
- To develop and foster a community of Hawaiian language speakers.
- To improve and support the overall health of our learning community.
- To engage parents and Kaua`i organizations in achieving a well-rounded Hawaiian education.
- To prepare students with the skills and knowledge necessary for academic and career success.

Ē LAUNA ME NĀ PO‘O

PO‘O KUMU

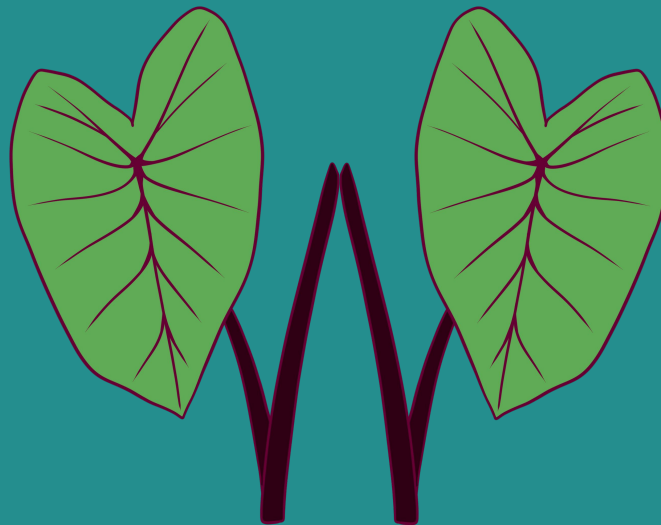


KUMU KALIKOLEHUA

PO‘O KULA



KUMU NĀMOMI



Ē LAUNA ME KA HUI KE‘ENA

MANAKIA



SOC



SASA



KŌKUA KE‘ENA

‘ANAKĒ ‘AULI‘I



‘ANAKĒ NOE

‘ANAKĒ KE‘ALA



‘ANAKĒ KAMANULANI

Ē LAUNA ME NĀ KUMU KULA HA‘AHA‘A

PAPA MĀLAA‘O



KUMU KA‘OHU

PAPA 1



KUMU MŌ‘ĪWAI

PAPA 2



KUMU KA‘IULANI



Ē LAUNA ME NĀ KUMU KULA HA‘AHA‘A

PAPA 3



KUMU KAWEHI

PAPA 4



KUMU KIELE

PAPA 5



KUMU PUALOKE

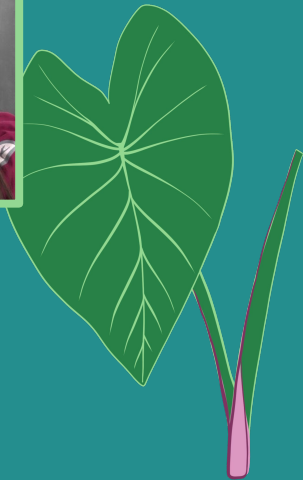


Ē LAUNA ME NĀ KUMU KULA WAENA & KI‘EKI‘E

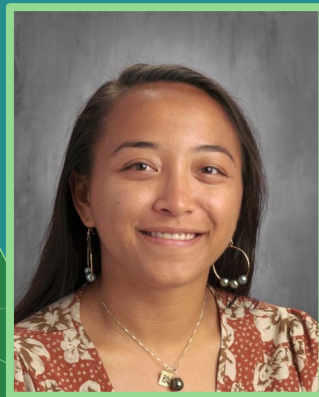
‘ŌLELO HAWAI‘I 6-8



KUMU HAMIHA



‘ŌLELO HAWAI‘I 9-12



KUMU KAWAILEHUA



Ē LAUNA ME NĀ KUMU KULA WAENA & KI‘EKI‘E

‘ŌLELO PELEKĀNIA 6-8



KUMU SHERI

‘ŌLELO PELEKĀNIA 9-12



KUMU MAHINA

PILI HELU 6-12



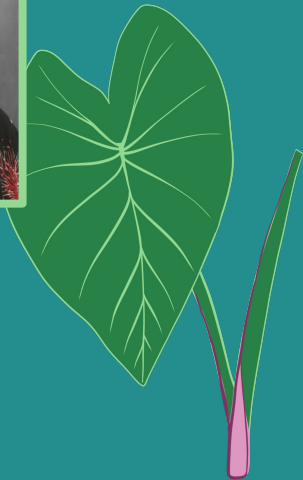
KUMU WAIAMAU

Ē LAUNA ME NĀ KUMU KULA WAENA & KI‘EKI‘E

PILI KANAKA 6-12



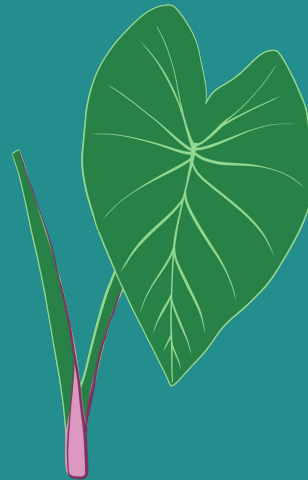
KUMU KANANI



CES



KUMU ‘ALOHILANI



Ē LAUNA ME NĀ KUMU KŌKUA

KULA HA‘AHA‘A



KUMU KAMĀLI‘I

KULA WAENA & KI‘EKI‘E



KUMU MĀHEALANI

KULA WAENA & KI‘EKI‘E



KUMU DEEDEE

Ē LAUNA ME KA HUI KO‘O

KUMU A‘OA‘O



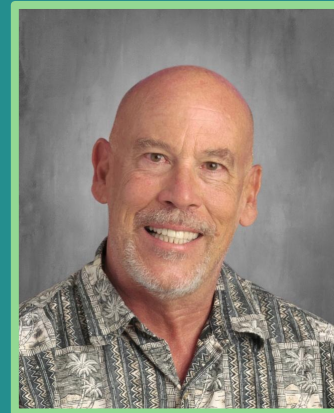
KUMU LEINA

SSC/ ACADEMIC COACH



KUMU DEVI

KUMU KĀKO‘O



KUMU RYAN

KUMU KĀKO‘O



KUMU KAMALANI

Ē LAUNA ME NĀ KALAIWA KA‘A ‘ŌHUA

KA MOKU O PUNA & KO‘OLAU



‘ANAKĒ DEEDEE

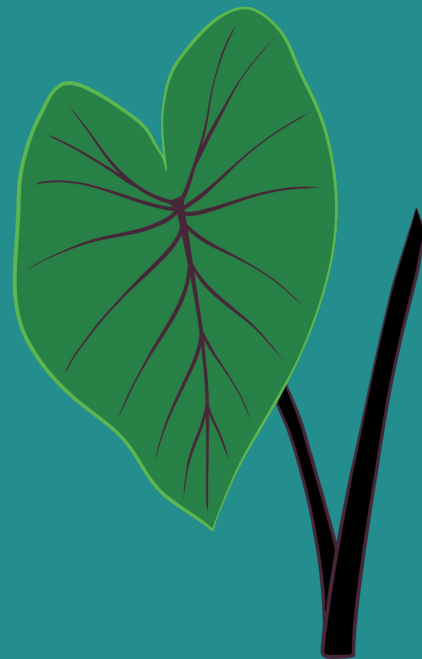
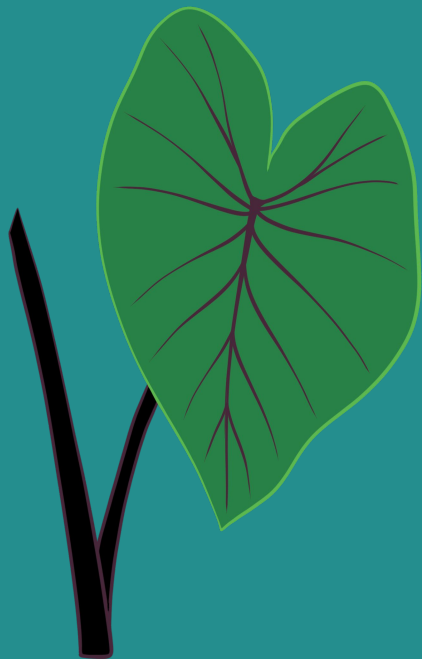
KA MOKU O KONA



‘ANAKĒ / ‘ANAKALA

Puke 'Ohana *'Ohana Handbook*

'Ohana Handbooks are available on our website and limited printed copies can be accessed in the ke'ena.



Ka Hele ‘Ana i ke Kula *Attendance*

- Kawaikini strongly discourages absences for reasons other than illness or emergency situations
- Absences considered “**Excused**” include:
 - Illness, injury, quarantine (*chicken pox, measles, etc.*)
 - Medical or dental appointment with a doctor’s note
 - Death in the family
 - Attendance in court
 - Family emergency (*upon SASA’s approval*)
 - Special cases (*upon SASA’s approval*)
- Students who arrive after **10:30am** or leave school before **10:30am** will be marked absent for that day
- **Kawaikini is required to report chronic absenteeism to family court**

No Ka Lole Kūpono *Dress Code*

- Po‘akahi-Po‘ahā: Pale‘ili kula *Monday-Thursday: School Shirts*
- \$10 fee for unreturned loaner shirts
- Po‘alima: Lole Koho Fridays: *Free choice*
- Pale‘ili kula are to be worn on all huaka‘i unless specified
- Appropriate school attire:
 - Refrain from wearing excessively short, tight, or baggy clothing
 - Refrain from wearing clothing that promotes drugs, violence, and sexual activity
 - No alterations to school shirts allowed
 - Footwear must be worn daily
 - Sunglasses and hats must be removed in classroom settings
 - Huaka‘i students must return to school in appropriate school attire (No beachwear)



No ka Ma‘i *Regarding Illness*

- If your child is showing any symptoms of illness, please keep them home to prevent the spread of illness in our school community
- If your child has any of the following symptoms, they should refrain from coming to school:
 - Fever
 - Extreme sore throat
 - Excessive coughing or stuffy nose accompanied with an infection
 - Vomiting
- Notify the school office that your keiki will be absent
- Doctor note

[Staying Safe from Respiratory Viruses](#)



Hawai‘i Keiki Program

- When your child is sick or injured at school, the on-site Health Technician can provide first aid in the health room and can connect with a Hawai‘i Keiki Nurse Practitioner (APRN) for a free virtual appointment using video technology
- Nurse Practitioner is able to provide a virtual physical assessment, diagnose, and treat your child with your permission.
- Virtual visits can also include the parent or guardian on their phone or computer allowing for further discussion about the assessment, diagnosis, and plan with the Nurse Practitioner.
- For more information please go to: www.uhphawaii.org.



Employee Benefits Include:

Medical, dental, vision, prescription, retirement plan, flex spending plan and more!



APPLY TODAY USING THE LINK OR QR CODE!

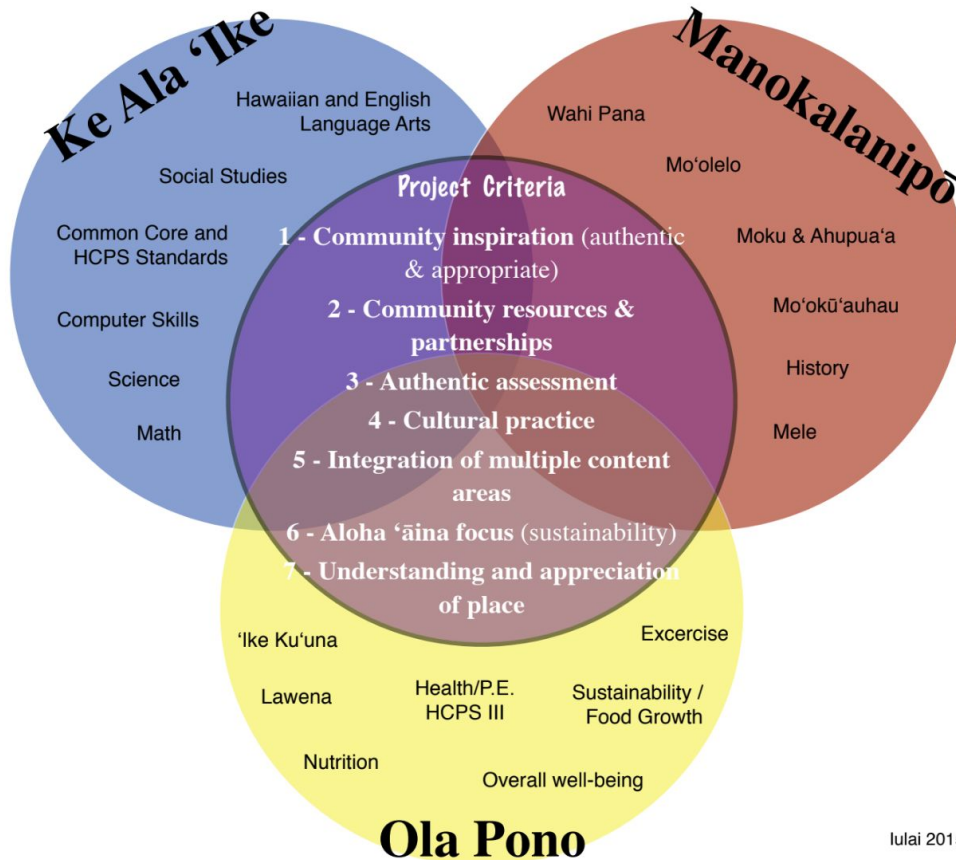
<https://tinyurl.com/yckjr8za>

Ka Palekana Haumāna *Student Safety*

- Please review the emergency response plan
- We have 2 Certified ALICE trainers on-site
- Keep emergency contact information updated

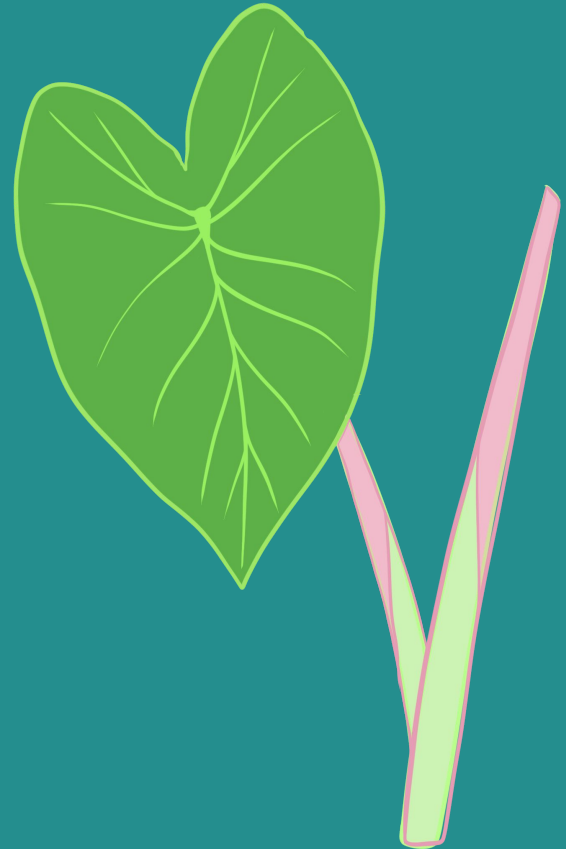


Nā Papahana A'ō Academic Programs



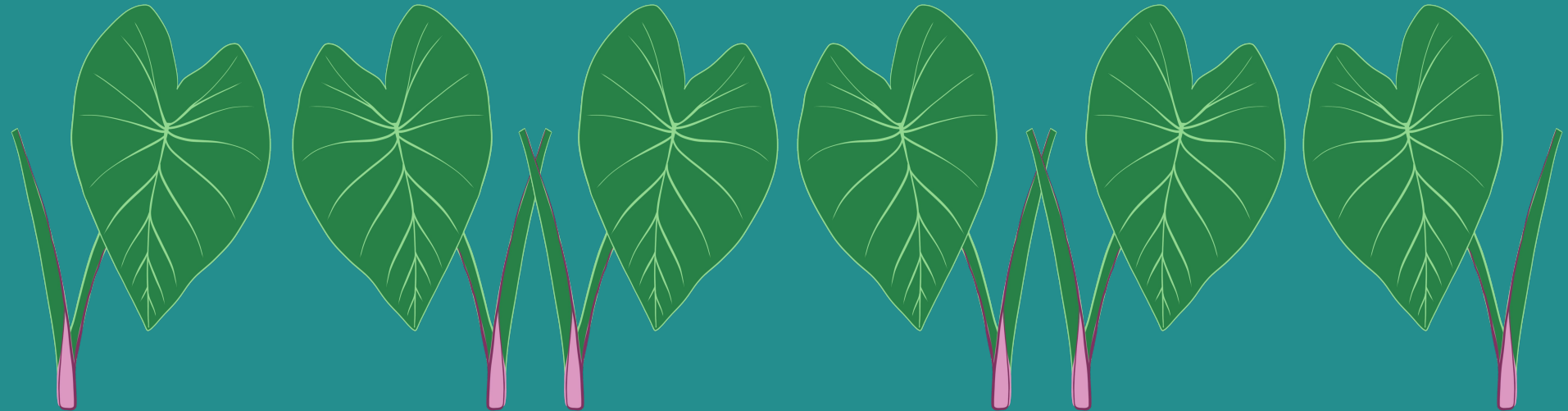
Ka Pilina Kaiaulu *Community Partners*

- Alu Like
- Ho'ola Lāhui Hawai'i
- Kamehameha Schools
- KALO
- Keala Foundation
- Kukui'ula
- Lili'uokalani Trust
- Mana Maoli
- Mālie Foundation
- Nā Pua No'eau
- State agencies
- YWCA
- And many more



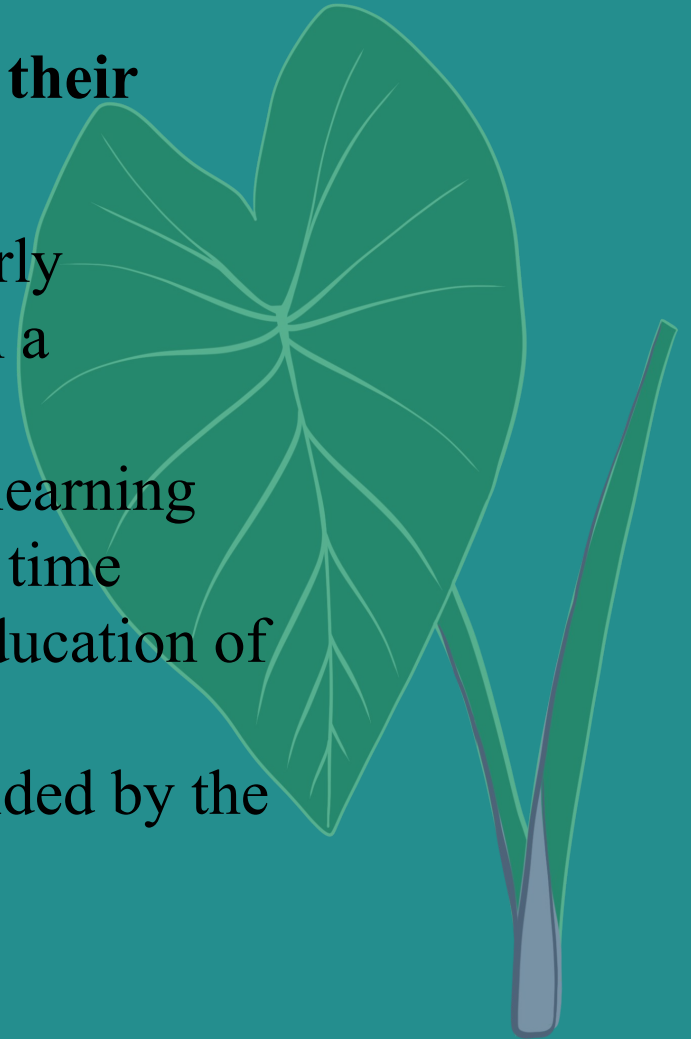
Mana‘o ‘Ohana *‘Ohana Expectations*

In order to create a thriving learning community for our keiki, kumu, community, and ‘ohana, we require continued active engagement.



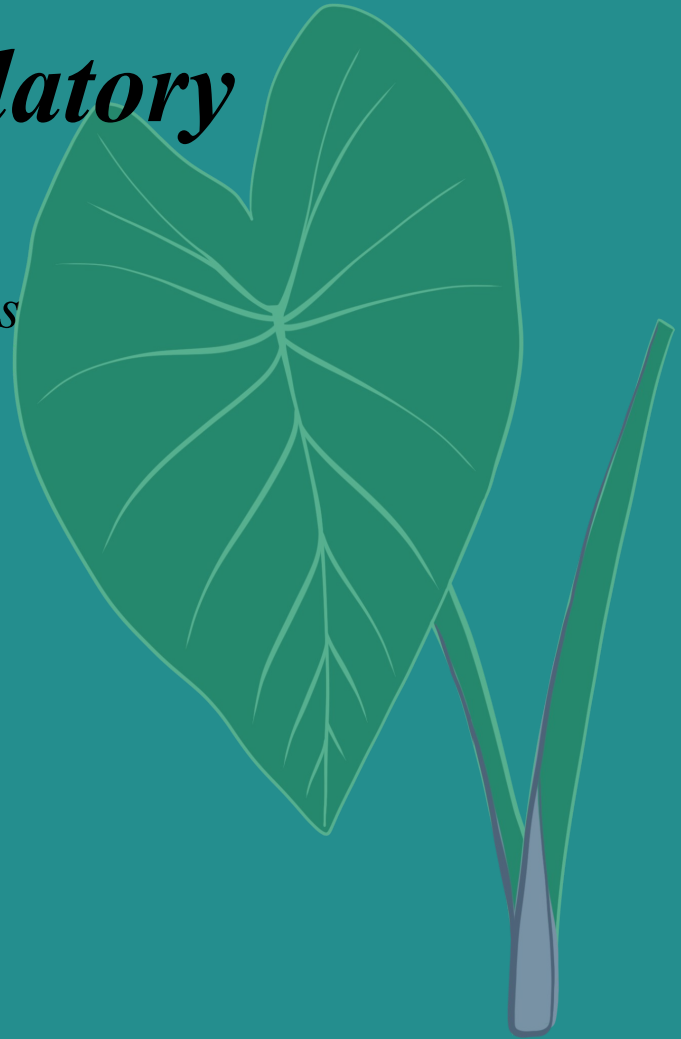
Makua are encouraged to be involved in their keiki's school in the following ways:

- See that my keiki attends school regularly
- Communicate with my keiki's kumu on a consistent basis
- Encourage and be aware of my keiki's learning
- Provide positive use of extra-curricular time
- Participate in decisions related to the education of my keiki
- Attend Makua quarterly meetings provided by the kula



Nā Koina *Mandatory*

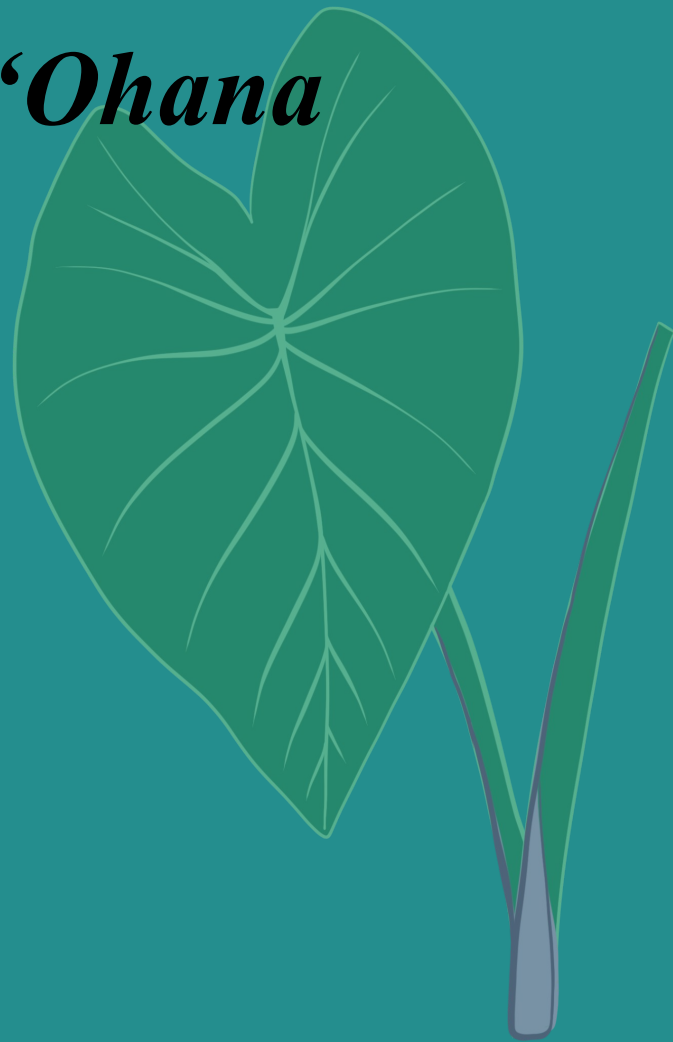
- Hālāwai Kumu *Parent-Teacher Conferences*
 - 3 per school year
- Ka Holomua Haumāna *Student Progress*
- Hālāwai Makua *Parent meetings*
 - 4 per school year



Nā Koina - *Faila 'Ohana*

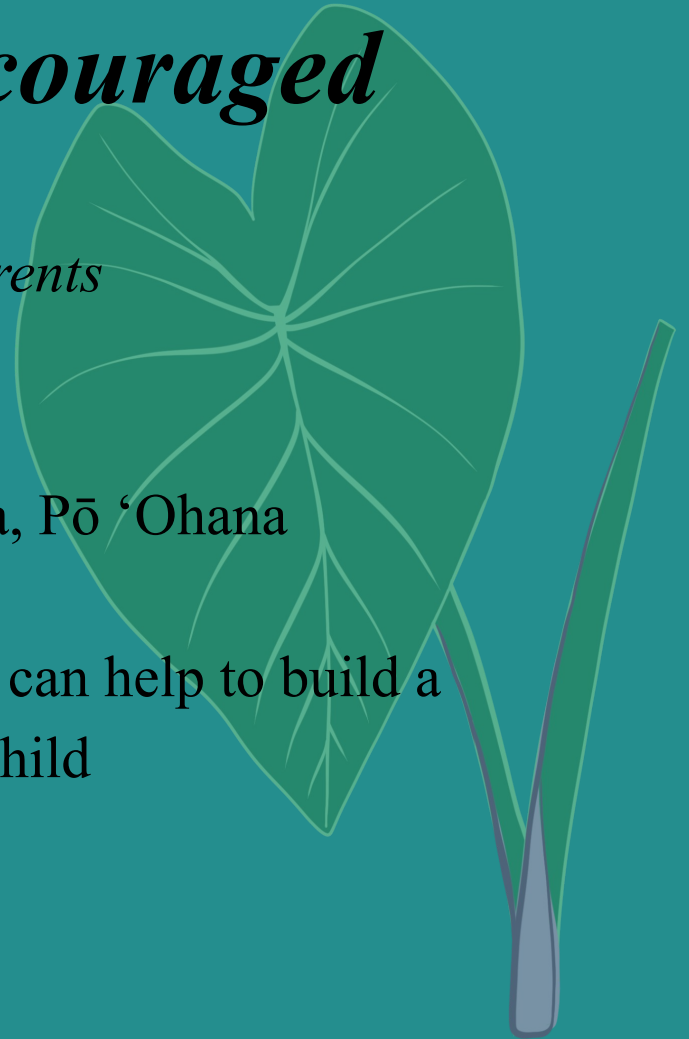
Nā Palapala

- Title I
- Medical Forms
- Emergency Information
- Ho'ōla Lāhui
- Publication Permission Form



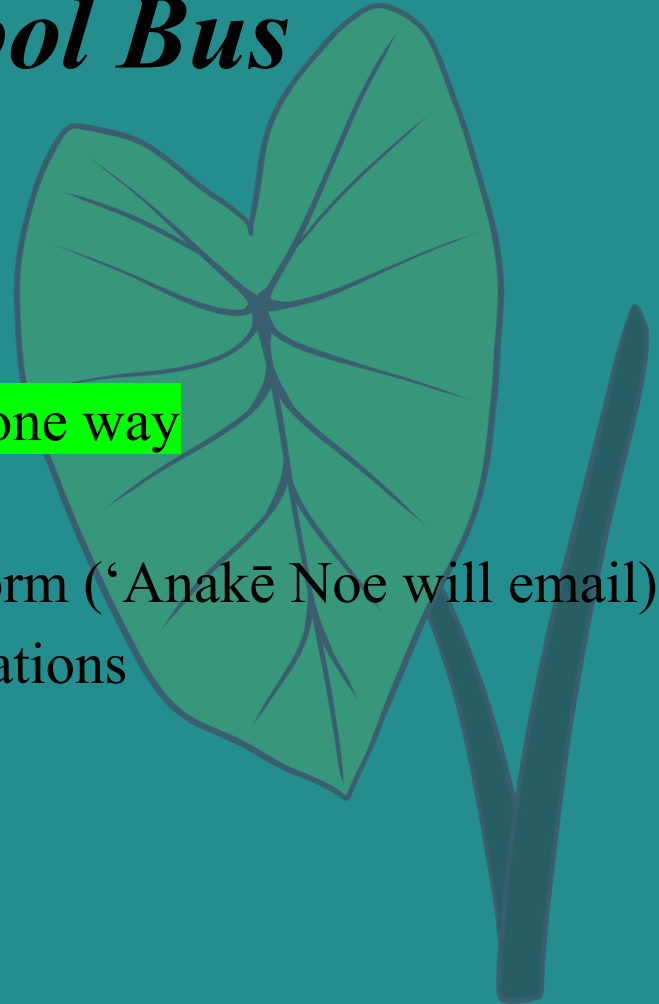
Ho'opaipai 'ia *Encouraged*

- Papa Makua 'Ōlelo Hawai'i classes for parents
 - Kumu Ka'iulani
 - Date and time to be announced
- Lā Hō'ike'ike, 'Aha Na'auao, Lā Kū'oko'a, Pō 'Ohana
- Kula clean-ups (Please Sign up)
- Check with your child's kumu on how you can help to build a supportive learning environment for your child



Ka‘a ‘Ōhūa *School Bus*

- Bus routes
 - East
 - South and Westside
- Bus rate: \$75 round trip per quarter \$38 for one way
- Bus passes are required for all riders
- Bus applications are available via Google Form (‘Anakē Noe will email)
- Please review bus rules and behavior expectations with your child



PALEKANA



Ma mua o ka 'e'e 'ana a'e

- E kali me ka mālie
- E kūemi i hope i lawa ka lumi no ka wehe 'ana o ka puka



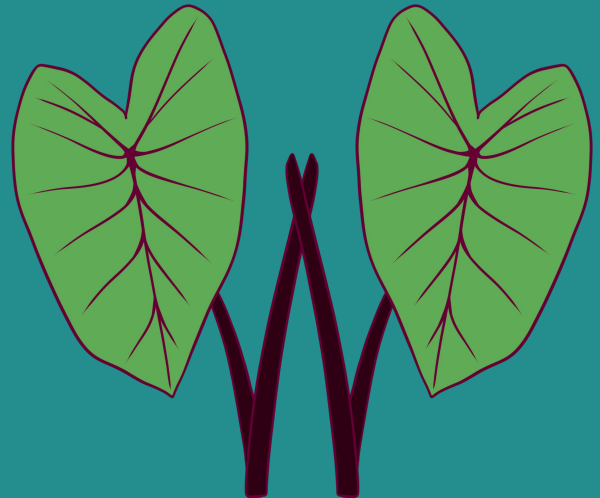
Ma ka holo 'ana

- E noho wale, 'a'ohē 'auana 'ana
- Ma loko wale nō kou kino a me ka 'ukana
- E maliu aku i ke kalaiwa



Ma ka ha'alele 'ana aku

- E ha'alele me ke akahēle
- 'A'ole e ka'alo ma hope aku o ke ka'a 'ōhua
- E kali i ke kalaiwa ka'a 'ōhua, nāna e hō'ike aku i ka wā kūpono o ke ka'alo 'ana aku i mua o ke ka'a 'ōhua



‘Aina Awakea School Lunch Program

- Lunch service provided by Epic Eats LLC
- Not a participant for USDA free school lunches and waiver to national school lunch programs
- Lunches will be provided for **3 days ONLY** ***until further notice***
 - **Mon, Tues, Wed**
 - Please provide a healthy lunch that adheres to our healthy food policies on **Thurs & Fri** (No microwave and refrigeration available)
- EZ Pay App will be used for lunch purchase (ezschoolapps.com)
 - New Cost: Nominal: \$1.00, Reduced = \$2.00, Full Price = \$4.00, Staff/2nd meal = \$7.50
 - Credit Card fee is 3.75%

Ka Mea'ai Ola Kino *Healthy Food Policy*

KŪPONO

examples of GREAT snacks

kalo / poi
ulu / 'uala
fresh fruit / dried fruit
nuts
trail mix (no chocolate)
vegetable sticks
(no sugar) applesauce
(low sugar) cereal
pretzels
plain popcorn
yogurt
Cheese
(original) baked chips
100% fruit juice
Wheat Thins
100% Fruit Roll-Ups

'ANO KŪPONO

examples of OKAY Snacks

granola bars (w/ some chocolate)
flavored baked chips
Goldfish crackers
canned fruits
trail mix (some chocolate)
Gogurt
fruit juice
fruit muffins (w/out frosting)
Fried chips
Sports drinks

KŪPONO 'OLE

examples of NO-WAY Snacks

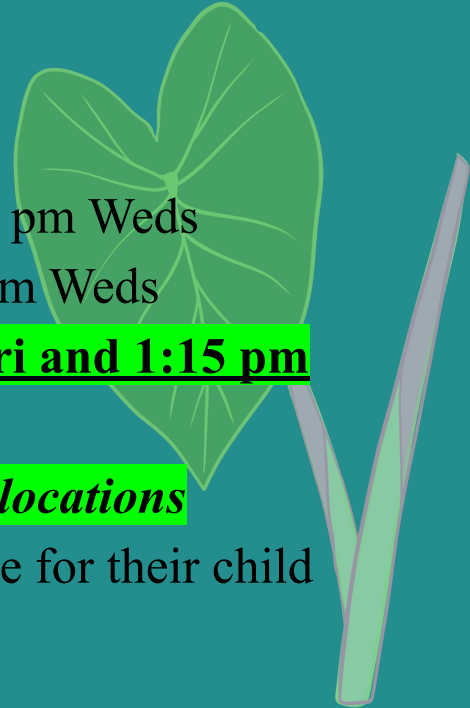
[anything with high-fructose corn syrup, sugar
as the first main ingredients and high sodium]

candy; gum; soda
raw saimin
Rice Krispie treats
Energy drinks
Fast Foods



Ka Hō‘ea & Ha‘alele *Arrival & Dismissal*

- Drop-off time is between **7:15-7:40 am**
- ***Drop off before 7:15 am is not allowed.***
- If a student arrives after 7:45 am they will be considered tardy
- Drop-off location for Papa M-5 is the **Hale Piko**
- Drop-off location for Papa 6-12 is the **Kualua Campus**
- Kula Ha‘aha‘a dismissal 2:00 pm Mon, Tues, Thurs, Fri and 1:00 pm Weds
- Kula Kualua dismissal 2:10 pm Mon, Tues, Thurs, Fri and 1:10 pm Weds
- **Please pick up your child by 2:15 pm on Mon, Tues, Thurs, Fri and 1:15 pm Weds as no one is available to monitor your keiki**
- ***Parents are required to remain in their vehicles at the drop off locations***
- Parents arriving for early pick up are required to wait in the office for their child



Kaua'i Community College (KCC)

Campus Driveway

To main road →

Employee access only

Fire Lane

Pūnānele Preschool

PAPA 6-12

Student/Bus Drop-off

M-5 Drop off/Pick up

Hale Piko

Ke'ena

Hale 'Aina #2

Hale 'Aina #1

KAWAIKINI

Hale 'Aina #3
Hale 'Aina #4

DROP OFF/PICK UP

8A 8E 9

10A 10E

11A 11E

Staff Parking

Visitor Parking

School Parking

1 2A 2E

7E 7A

2A

6E 6A

3A 3E

4A

4E

1E

5

1A



Ho‘opākela *After School Program*

- Papa Mālaa‘o-Papa 6
- Ho‘omaka ma August 12th
- 2:00-4:00 pm Mon, Tues, Thurs, Fri
- 1:00-4:00 pm Wed
- Fee is \$60 per month/per child
- Registration will be open at 8:00am on Friday, July 26th
- There is limited space- first come, first served basis
- Alaka‘i for Ho‘opākela:
- Questions can be directed to ‘Anakē Noe
noe@kawaikini.com



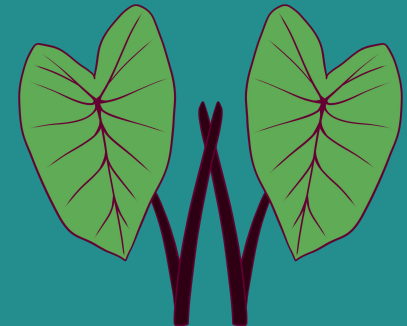
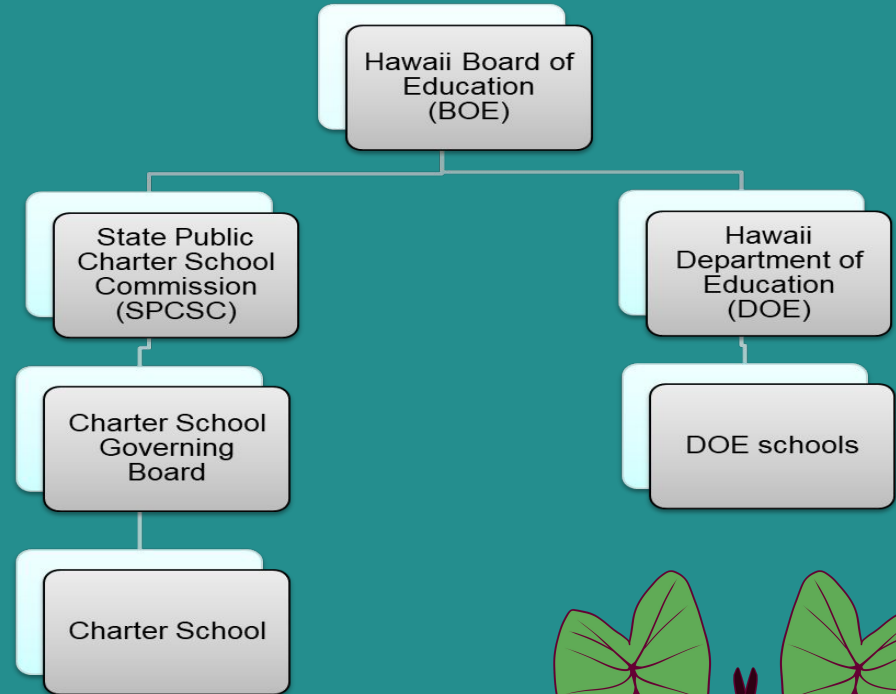
Title I

- This program is to provide all children with a significant opportunity to receive a fair, equitable, and high-quality education, and to close educational achievement gaps.
- **Comprehensive Needs Assessment (CNA)** Developed from our Self Study 2020, in order to gain a better understanding of the strengths and the contributing/root causes of the identified needs.
- **Title I Schoolwide Plan** is developed, implemented and monitored throughout the year. It describes how we will improve academic achievement by addressing contributing causes of needs identified in our CNA. Our school's Comprehensive Academic Plan (CAP) is considered to be the Title I Schoolwide Plan.
- **Parent and Family Engagement** activities are to improve student academic achievement and school performance.
- **Title I:** CNA and Schoolwide Plan are posted on the school website at www.kawaikini.com/Community/'OhanaResources



Ka Papa Alaka'i *Governing Board*

- Responsible for ultimate oversight of the school
- Hires, evaluates supports, and if necessary discipline or terminate Executive Director
- Collaborates with Administration to create school budget
- Creates / oversees school's policies
- Oversight of Po'o Kula on school's alignment to mission, standards and achievement

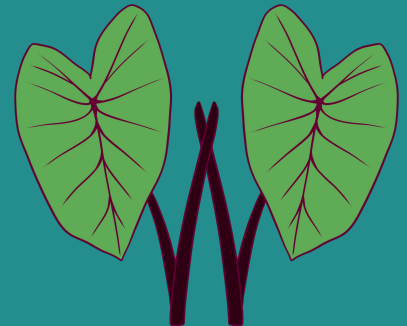


Voting Board Members

- Leimakana Ornellas,
President
- Vacant
Vice President
- Kalei Carvalho,
Treasurer
- Megan Deets,
Secretary
- Zena Wetzel
- Vacant

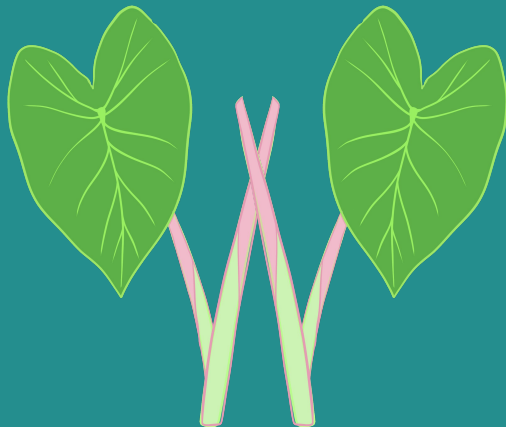
Other Board Members

- Nāmomi McCorrison,
Ex-Officio



Nā Hulu Makua

- Parent Board
- Works with school faculty & staff to create engaging school community events
- Meets on the first Thursday of each month at 5pm



Officers

- Leinā‘ala Obrero,
President
- Carden Vincent,
Vice president
- Stormy Hulali Souza
Secretary
- Marcela Ezaki
Treasurer
- Govinda Rubin
Communications Coordinator
- Rua Brock
Historian
- Devi Berg
‘Elele Kumu

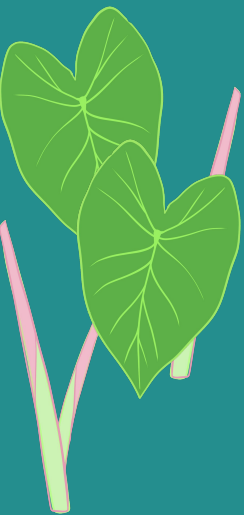
First NHM event of SY 2024-25

E Onipa‘a Kākou!
In Honor of Queen Lili‘uokalani’s
Birthday

29 ‘Aukake 2024
4:30-7:30 p.m.
Hale ‘Aina

- Queen Lili‘uokalani Trivia & Mele
- Lei Making

NHM will provide main dish, potluck sign
ups will be announced soon!



2024 - 2025 Nā Hālāwai Nā Hulu Makua

'AUKAKE
01
4 PM - 5 PM

KEPAKEMAPA
05
4 PM - 5 PM

'OKAKOPA
03
4 PM - 5 PM

NOWEMAPA
07
4 PM - 5 PM

KEKEMAPA
05
4 PM - 5 PM

IANUALI
09
4 PM - 5 PM

PEPELUALI
06
4 PM - 5 PM

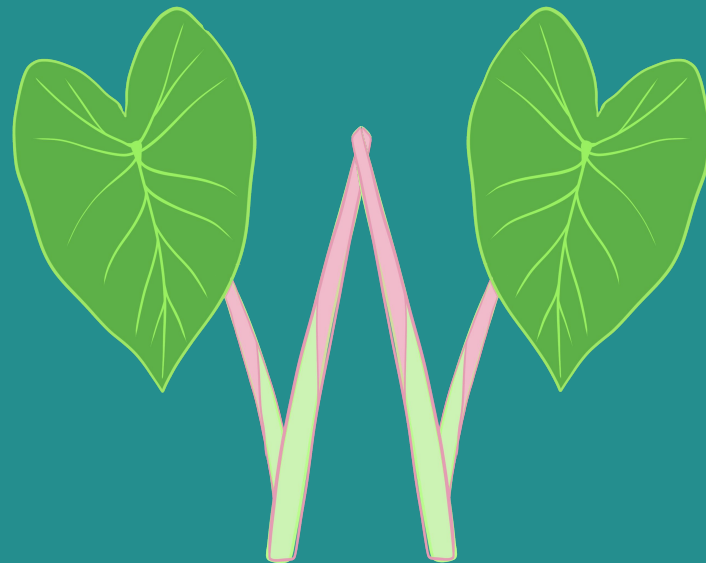
MALAKI
06
4 PM - 5 PM

'APELILA
03
4 PM - 5 PM

MEI
06
4 PM - 5 PM

E komo mai!

All parents welcome to Nā Hulu Mākua meetings.
We meet the first Thursday of the month, except January.
Meeting locations to be announced.



Supporting the Language of Kaua'i

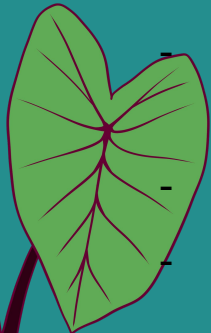


Supporting the
Language of
Kaua'i, Inc.

- Supporting the Language of Kaua'i, Inc. (SLK) is a non-profit organization that supports the mission and vision of Kawaikini
- The mission of SLK is to enhance and preserve the native Hawaiian language.
- SLK meets monthly
- For more information:
- www.supportingthelanguage.org

Officers

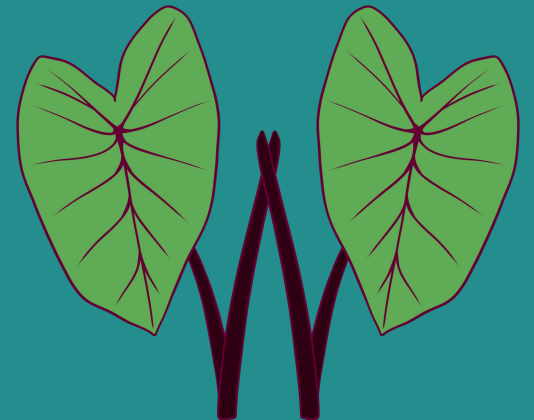
- Hōkū Ka'auwai
President
- Lea Kai'aokamālie
Vice President
- Natasha Troche
Secretary
- Kimo Perry
Treasurer
- Jessell Tanaka
Contract Provider
- Leilani Spencer
Executive Director



Supporting the Language of Kaua‘i

SLK’s main areas of focus in 2024:

- To plan the use of the 3.8 acres located north of the ditch above the existing upper campus
- Help Kawaikini secure funding for necessary projects designated by the school.
- To coordinate and sponsor a “Tri-Board” Event to include Governing Board, Na Hulu Makua Board and SLK.
- To participate in the Kawaikini Facilities Committee
- To administer our own grants program to community organizations who are working to further Hawaiian language education.



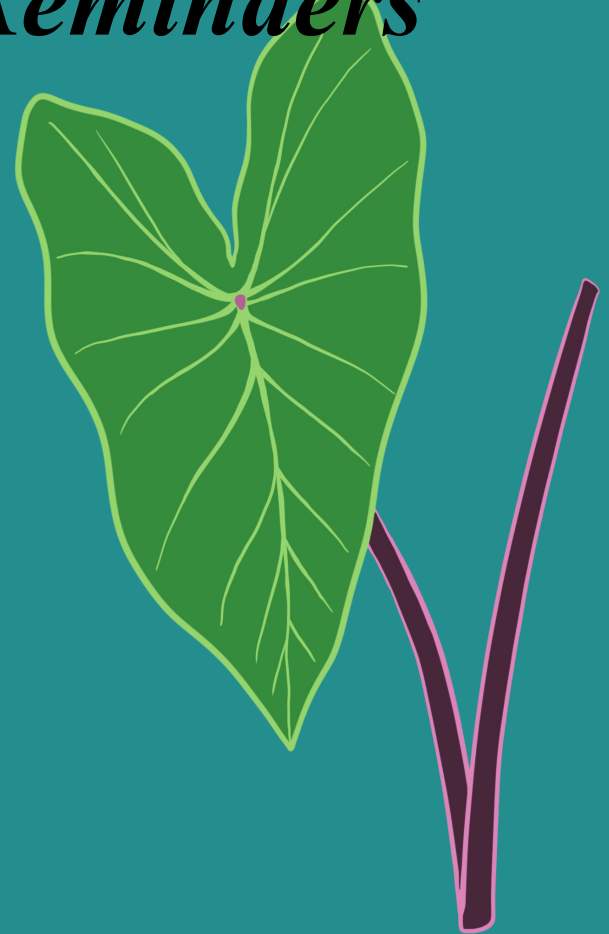
Nā Papa Hana Hou *New Projects*

- Deck replacement on Hale Akamai 1
- Māla restoration
- Cement poured: Hale Piko to Ke'ena
- Tree trimming: Manakō/Laikī
- 12x12 Classroom



He mau Ho‘omana‘o *Reminders*

- T-shirt orders (kulathreads.com)
808-847-6600
- E-mail addresses should be personal emails, NOT connected to your place of employment due to firewall in place
- Paperwork & ‘Ohana Folder: due at office
Friday, July 26th.
- Review the Back of school calendar



Ho‘i i ke Kula *Back to School*

Student day: Monday, August 5, 2024

- Papa Mālaa‘o *HUI A ONLY*: dismissed at 11
- Kula Ha‘aha‘a Papa 1-5
- Kula Kualua Papa 6 & Papa 9
- All Ke Ala Hūlili students

Student day: Tuesday, August 6, 2025

- Papa Mālaa‘o *HUI E ONLY*: dismissed at 11
- All students grades 1-12
- Kindergarten parents please review the Papa Mālaa‘o Schedule

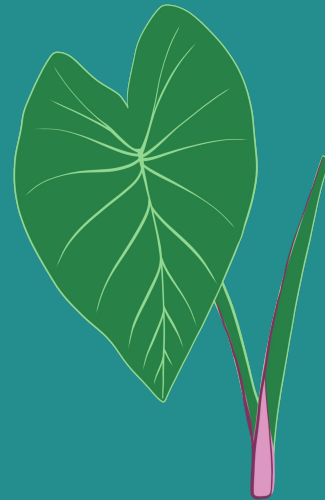
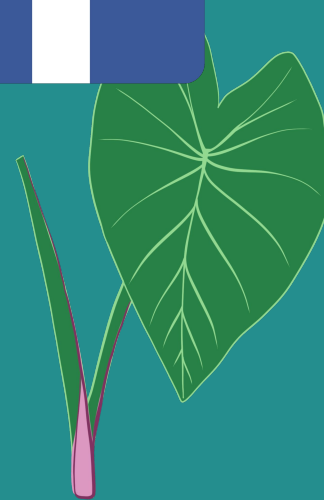
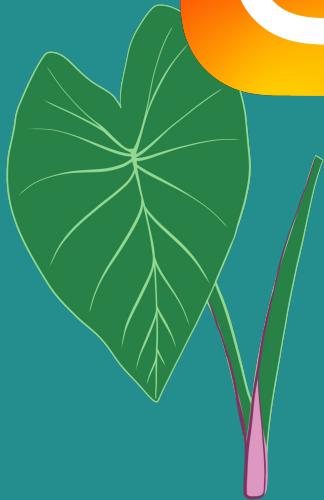
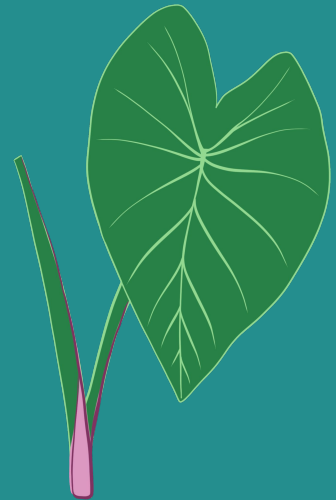


Ka‘a‘ike *Communication*

- **Main office:** 808-632-2032
- **Kumu Emails:** *kumuname@kawaikini.com*
- **Website:** www.kawaikini.com
- **Team Reach:** Nā Makua o Kawaikini
Group code: **Kawaikini2032**



@kawaiinincps



Mahalo!

MAHALO NUI NO KA HELE 'ANA MAI I KA HĀLĀWAI HO'OLAUNA

