

**Kawaikini New Century Public Charter School  
State of the School Report to Parents and Stakeholders**

For the period January 1, 2015 – December 31, 2015

Submitted January 14, 2016



**K A W A I K I N I**

*A New Century Public Charter School*



**TABLE OF CONTENTS**

I. Executive Summary .....	3
A. Message from the Executive Director.....	4
B. Message from Governing Board President ....	5
II. Overview of Kawaikini .....	6
A. Quick Facts .....	6
B. Founding .....	6
C. Governing Board .....	6
D. Beliefs, Goals, Learning Expectations.....	7
III. 2015 Summary and Report .....	8
A. Student Enrollment .....	8
B. Faculty and Staff .....	8
C. Academic Programs and Initiatives .....	9
D. School Performance .....	12
E. WASC Accreditation .....	15
F. Campus and Facilities .....	16
G. Financial Condition .....	19
H. Parent Participation .....	20
I. Community Involvement .....	21
J. Strategic Plan .....	24
IV. Highlights of 2015 .....	25
V. Key Priorities for 2016 .....	30
VI. Conclusion .....	32
VII. Appendices	
A. Governing Board bios.....	33
B. Faculty and Staff bios.....	35
C. Strive HI report.....	40
D. Testing Results.....	42
E. Index of Community Support .....	44
F. 2014-2015 Audit.....	45



K A W A I K I N I

*A New Century Public Charter School*

## I. EXECUTIVE SUMMARY - 2015

The current report provides an overview of the Kawaikini New Century Public Charter School for the calendar year 2015 (January 1, 2015 through December 31, 2015). This report is for our parents and other stakeholders and is designed not only to document the activities of Kawaikini over the previous year, but also to provide an occasion for reflection. As in recent years, this report provides specific highlights of the previous year. Additional information about Kawaikini – as well as information about more current activities at the school - may be found at the school's website at [www.kawaikini.com](http://www.kawaikini.com).



## A MESSAGE FROM KAWAIKINI'S EXECUTIVE DIRECTOR

Aloha mai e Nā `Ohana o Kawaikini!

*He `a`ali`i kū makani mai au; `a`ohe makani nāna e kula`i.* (I am a wind-resisting `a`ali`i; no gale can push me over. A boast meaning "I can hold my own even in the face of difficulties." The `a`ali`i bush can stand the worst of gales, twisting and bending but seldom breaking off or falling over.) This `olelo no`eau reminds us that life occurs, and we can still prevail, as long as we are flexible, open, and can move with what comes our way.

2015 has been another amazing year, our 8<sup>th</sup> year. We have grown once again in this school year to 141 students. Our faculty & staff have experienced several changes in positions, and are relatively stable. Many different situations occurred that we dealt with and some, we are still dealing with. And we will prevail, as long as we can be flexible and allow these opportunities to help us grow. MAHALO NUI TO EVERYONE for staying the course. It takes all of us!!



Some highlights of the year to mention:

- We began the year celebrating the opening of Studio K – a partnership of High Tech Youth Network of New Zealand, the Office of Hawaiian Affairs and Kawaikini. The Studio is a Technology Program providing 20<sup>th</sup> century technology skills to our youth, from grades 5-12. Shane Cobb-Adams, Studio Producer, has been mentoring students in the technology available, and in turn has created students who are mentoring other students. Shane was awarded the Adobe Creative Educator of the year, one of 50 awards globally across 80 countries. Ho`omaika`i!
- Makua, kumu, limahana and keiki discussed the issue of bullying, which created shared understanding of the appropriate behavior expectations at Kawaikini, and resources now being used.
- The Prince Kuhio Celebration Pa`ina brought the entire Kawaikini `Ohana together to fundraise for the future playground equipment for our keiki.
- Hawai`i Public Charter School Network presented Kawaikini the Best Practice for Community Partnerships award!!
- Kawaikini found itself without a lunch vendor for the new year when Lanakila Kitchens closed their doors in May. We started the new school year with no lunch service. Then, we began providing free lunches once a week beginning the end of September and free lunches twice a week in October and part of November. Then, \$1 lunches were offered from the ending of November until the winter break in December.
- During the summer a small, concentrated section of asbestos in the office building was completely removed. We are Asbestos Free!!
- Mahalo to all who remained respectful and steadfast in exhibiting the kupono (appropriate) behavior that we expect of all Kawaikini students and employees, even during challenging times of the employee dispute.
- Kawaikini appreciates Kiahuna Homeowners Association and The Cliffs at Princeville, which supported Kawaikini with large donations.
- Malama Kaua`i and Adam Asquith have brought Kawaikini kumu, students and `ohana, and the larger community together to create a garden at Kawaikini and fruit trees that dot the landscape.

Our goals for the year included: (1) common understanding of appropriate behavior of Kawaikini students; (2) improving the capacity of `Ōlelo Hawai`i at Kawaikini; (3) continuing to address the Accreditation action plan and recommendations and the Strategic Plan; (4) sustaining and maintaining Kawaikini's physical plant; and (5) defining the organizational structure.

E kū pa`a kākou ma hope o ka mea kūpono (We stand behind what is right)!!!

`O wau iho nō,

Kahu (Kumu) Kaleimakamae Ka`auwai

**A MESSAGE FROM KAWAIKINI'S GOVERNING BOARD PRESIDENT**

Aloha a Hau'oli Makahiki Hou kākou,

Welcome everyone as we holomua through our eighth year at the Kawaikini New Century Public Charter School. Isn't it a wonderful feeling to be a part the Kawaikini 'ohana? As we painstakingly move forward with the growing pains of our school community, we are continually working towards reaching our potential to achieve higher education for our students.



Our school is maintaining its Continuous Improvement status with the Department of Education's Strive HI classification. The Strive HI measures the academic performance of all the charter schools grade divisions. 75-85% of the schools fall within this category. The top 5% are in the Recognition category, and the remaining 3 categories require State intervention.

Kawaikini hosted the Charter School Listening Tour last month which covered the Charter School Commissions's Board Policies and the correlation of the Board of Education Policies. Out of the 145 policies approved as of 17 Nowemapa, 2015, only seven policies applied to the charter schools. It is important for the Charter School Board to remain diligent in their pursuit in seeking and obtaining policies beneficial to the charters.

According to the recent Annual Charter School Commission Report, it is critical we follow best practices in carrying out our responsibilities and duties in order to retain organizational knowledge. Kawaikini maintains transparency with current online postings to our website which lists the Governing Board members, agenda, minutes and previous years' State of the School Reports.

As we continue with the growth of our kula, you, are the vital ingredient to fulfill our mission and vision of our precious work. We need you to reflect on your commitment and make the decision to cross the threshold for the betterment of our program. Take a chance, our founders took that leap of faith!

Me ke aloha pumehana,

A handwritten signature in black ink, which appears to read "J. Malia Asai". The signature is written in a cursive, flowing style.

J. Malia Asai, Governing Board President

## II. OVERVIEW OF KAWAIKINI

### A. Quick facts: School Year 2015-16

School Name:	Kawaikini New Century Public Charter School (KNCPCS)
Established:	July 2008
Students (2015-2016)	141
Lead Teachers:	10.0
Educational Assistants:	3.0
Maintenance/Bus:	2.0
Administration:	4.0
Lead teacher/student ratio:	14.1/ 1
Instructional staff/student ratio:	10.8 / 1
Language of instruction:	Hawaiian only through grade 4; Hawaiian and English in grades 5-12.
Executive Director:	Kaleimakamae Ka'auwai, M.Ed.
Academic Director:	'Alohilani Rogers

### B. Kawaikini's founding

Kawaikini New Century Public Charter School was established as the result of a long-standing dream of Hawaiian immersion parents and teachers to provide a stronger educational model for Hawaiian-language based instruction on Kaua'i. Upon receiving a planning grant under the USDOE's Charter Schools Program in 2006, Kawaikini's support organization, Supporting the Language of Kaua'i, Inc. (SLK, Inc.), established an interim local school board (ILSB) which submitted the application for charter status to the State of Hawaii's Charter School Review Panel. In October 2007 Kawaikini received one of two available charters through a highly competitive application process, and opened its doors for instruction in July 2008. In May 2014 Kawaikini received a full six-year accreditation by the Western Association of Schools and Colleges (WASC).

### C. Kawaikini's Governing Board

Kawaikini is governed by a Governing Board (GB) that consists of eight members who are appointed for three-year terms. Currently, Kawaikini's Governing Board consists of the following members whose three-year terms are due to end as follows (see *Appendix A* for Governing Board bios):

Governing Board member	Office	Term Ends
Jewel Asai	President	June 30, 2017
Leilani Spencer	Vice President	June 30, 2016
Ray Blouin	Treasurer	June 30, 2017
Leilehua Rivera	Secretary	June 30, 2018
Nāmomi McCorriston*		June 30, 2016*
Lei'ilima Rapozo		June 30, 2016
Lou Nishida		June 30, 2017
'Alohilani Okamura		June 30, 2018
Kahu Kaleimakamae Ka'auwai	Ex-officio (non-voting)	No term limit

\*Appointed to fill out vacated term of 'Anela McGerity

Kawaikini has also instituted an Associate Membership program which allows people to participate on the Governing Board in a non-voting, associate capacity. Anyone interested in participating on the Governing Board in this capacity may contact a current board member for more information.

The meeting schedule for the Governing Board has been approved through the current fiscal year: January 21, February 18, March 17, April 21, May 19, and June 16. All meetings begin at 5pm on the Kawaikini campus and are open to the public.

Parents interested in serving on the Governing Board can submit an application available at the school or online at [www.kawaikini.com/community/board/](http://www.kawaikini.com/community/board/).

#### *D. Kawaikini's beliefs and general goals*

As set forth in its charter with the state, Kawaikini's beliefs and general goals are as follows:

##### Beliefs

- We believe that we have a responsibility to cultivate and nurture the traditional language, culture, and values of Kaua'i.
- We believe that the Hawaiian language should be a respected and normal part of daily life throughout Hawai'i.
- We believe that bilingualism is cognitively advantageous.
- We believe that good physical, spiritual, and emotional health is vital to learning.
- We believe that being part of a caring community provides children with the inner strength to succeed throughout life.
- We believe that a diverse and academically rich education is necessary to thrive in a dynamic, ever-changing world.

##### General Goals

1. To create and implement an integrated K-12 Kaua'i-based curriculum.
2. To develop and foster a community of Hawaiian language speakers.
3. To improve and support the overall health of our learning community.
4. To engage parents and Kaua'i organizations in achieving a well-rounded Hawaiian education.
5. To prepare students with the skills and knowledge necessary for academic and career success.

##### Expected Schoolwide Learning Results (ESLRs)

1. Kawaikini students are proficient in both Hawaiian and English (Hawai'i State Constitution: Article XV, Sec. 4)
2. Kawaikini students are knowledgeable about Kaua'i and appreciate and care for their island home.
3. Kawaikini students lead healthy lives.
4. Kawaikini students are prepared to succeed in college and/or career and participate in a global community.
5. Kawaikini students conduct themselves in a culturally appropriate manner that reflect values instilled at Kawaikini.

### III. 2015 Summary and Report

#### A. Student enrollment and admissions

For the 2015-16 school year, Kawaikini’s official enrollment count was 141 students: 25 students in Kindergarten; 19 in grade 1; 20 in grade 2; 14 in the grade 3; 18 in grade 4; 18 in the 5/6 pae; 19 in the 7/8 pae; 5 in the 9/10 pae, and 3 in the 11/12 pae. In addition to current enrollment, a waitlist has been generated for each grade and will be used if space becomes available during the school year.

**Figure 1. Enrollment by School Year**

School Year	Kawaikini Year of Operation	Enrollment	Change (%)
2008-09	Yr. 1	79	-
2009-10	Yr. 2	92	+16.4
2010-11	Yr. 3	106	+15.2
2011-12	Yr. 4	107	+1.0
2012-13	Yr. 5	115	+7.5
2013-14	Yr. 6	123	+6.9
2014-15	Yr. 7	135	+9.8
2015-16	Yr. 8	141	+4.4%

Enrollment for SY 2016-17 is projected to be 151 students, with enrollment in all grades from K-12. The enrollment process will begin January 14, 2016, with application deadline of approximately February 12. Applications submitted after February 12 will be reviewed on a space-available basis and will be eligible for wait-list lottery. Applications for new-student enrollment as well as re-enrollment forms for current Kawaikini ‘ohana are available online at: [www.kawaikini.com/admissions/](http://www.kawaikini.com/admissions/).

#### B. Faculty and staff (2015-16)

For the 2015-16 school year Kawaikini has been able to put in place a highly effective team of experienced and dedicated faculty and staff (see *Appendix B* for faculty and staff bios). These are:

##### ADMINISTRATIVE STAFF:

- Kaleimakamae Ka’auwai** (M.Ed.), Executive Director
- ‘Alohilani Rogers**, Academic Director, M-12
- Kaulana Smith**, Office Manager [Jan – Jun]
- Ke’ala Bristol**, SASA
- Stu Rosenthal** (MBA), Fiscal Manager [Jan - Sep]
- ‘Auli’i Herrod**, Office Assistant [Nov - Dec]

##### INSTRUCTIONAL FACULTY:

Kawaikini is blessed to have all Kumu Alaka’i positions filled. In addition, 90% of all positions have been filled with certified teachers.





**Ka`e`e Ah Loo** (M.Ed.), Kumu Alaka`i (malaa`o/kindergarten)  
**Uluwehi Torio**, Kumu Alaka`i (grade 1)  
**Nāmomi McCorrison**, Kumu Alaka`i (grade 2)  
**Lei Wann**, Kumu Alaka`i (grade 3)  
**Kaliko Goo**, Kumu Alaka`i (grades 4)  
**`Ānela McGerity** (M.Ed.), Kumu Alaka`i (grades 5/6)  
**`Alohilani Okamura** (PhD), Kumu Alaka`i – Secondary Hawaiian Language & Social Studies, 7-12, homeroom gr. 9  
**Leimakana Ornellas**, Kumu Alaka`i – Secondary Science, 7-12, homeroom gr. 11/12 [Jan - Jun]  
**Kanani Durant**, Kumu Alaka`i – Secondary Science, 7-12, homeroom gr. 11/12  
**Rebecca Cate** (M.Ed.), Kumu Alaka`i – Secondary Math, 7-12, homeroom gr. 7 [Jan - Jun]  
**Wahineu`i Waiamau** (BA), Kumu Alaka`i – Secondary Math, 7-12, homeroom gr. 7 [Jul - Dec]  
**Rebecca Stevenson** (M.Ed.), Kumu Alaka`i – Secondary English, 7-12, homeroom gr. 8

EDUCATIONAL ASSISTANTS AND ASSOCIATE INSTRUCTORS:

Kawaikini is fortunate to have an excellent team of Kumu Kokua who support instruction in the classroom.

**Kaulana Smith** (M.Ed.), Kumu Kīnānā (SPED) / SSC  
**Kaleilehua Victor**, Kumu Kōkua (grade K[M])  
**Kanoa Mayer**, Kumu Kōkua (grade 3/4)  
**Kawai`olu Torio**, Kumu Kokua (grades 5/6)



OTHER STAFF:

Kawaikini also has a dedicated team of support staff:

**George Jackson**, Bus Driver & General Maintenance  
**Debbie Jackson Mayer**, Custodian and General Maintenance [Jan - Jun]  
**Richard Chaffee**, Part Time General Maintenance [Jan - Jun]; Custodian and General Maintenance [Jul - Dec]

*C. Academic programs and Initiatives*

1. Curricular Foundations

Kaua`i a Manokalanipō (Kaua`i Focus)

Kawaikini’s Manokalanipō curriculum is being developed with each pae focusing on the different moku of Kaua`i, including Puna, Ko`olau, Hale Le`a, Kona and Nāpali.

Students study the specific moku and are able to experience these places first hand during excursions to these sites. The curriculum is designed to give students a well-rounded place-based understanding of the different areas of the island and to foster an appreciation of the beauty and diversity of Kaua`i.



### Ke Ala 'Ike (Career and College Preparation Focus)

Kawaikini's Ke Ala 'Ike component is designed to prepare students for career and college success. Hawaiian/English bilingualism is developed from K-12 by the methods of Hawaiian immersion in the elementary grades and, in the secondary program, some classes are taught in Hawaiian and others in English.

All teachers at Kawaikini utilize the current State standards and Common Core standards in planning instruction and, starting in grade 5, Kawaikini students also take the State standardized test in English.

Additionally, various community partnerships offer secondary students with online career and college planning, problem-solving skills and strategies, and financial aid workshops.

### Ola Pono (Health and Wellness Focus)

Kawaikini has an overall focus of Ola Pono, both in and out of the classroom. This is seen in the emphasis on recycling, exercise, and healthy food on campus. Students also participate in many physical off-campus projects on Manokalanipō field trips.

Additionally, Kawaikini has a long-standing partnership with Ho'ōla Lāhui Hawai'i who provides our students with presentations on hygiene, nutrition, and disease prevention, and various physical fitness opportunities. Ho'ōla Lāhui Hawai'i also provides an annual Makahiki celebration for Kaua'i's Hawaiian immersion schools that all students and staff look forward to every year!

## 2. Instructional Programs

### **Academic Programs and Initiatives**

#### **Ke Kula Ha'aha'a o Kawaikini, Papa K-6**

---

Kawaikini continues to be blessed with great community partners like Ho'ōla Lāhui Hawai'i. Ho'ōla Lāhui Hawai'i services our students with lessons in health, nutrition, exercise, and good sportsmanship.

Several grades in Kula Ha'aha'a have been fortunate to work with Kumu Mauiola Cook through funding from the Artists in the Schools Program. Kumu Mauiola provides (Hawaiian language) instruction in storytelling through creative movement.

Students in the secondary program at Kawaikini have been presenting their work to their families and to the elementary students and teachers as well through Academic Conference. They have also taken on a mentoring role for students in the elementary program, providing multi-grade learning opportunities for these younger students.



## Secondary Program, Papa 7-12

Kawaikini credit requirements at the secondary level reflect the rigor and relevance required by the Board of Education and remains true to its mission by requiring the successful completion of Hawaiian Language Arts at each year. Students are provided highly-qualified teachers in the following content-areas: Ōlelo Hawai`i, English, Math, Science, and social Studies. These teachers also bring with knowledge and experience in culture and protocol, music, crafts, hiking, restoration, and sustainability.



Students in the secondary program at Kawaikini have been presenting their work to their families and to the elementary students and teachers as well through **Academic Conference**. The Academic Conference is held at the end of each semester and requires students to present their learning both visually and orally. Student presentations include visual presentations in a gallery walk, PowerPoint research presentations, oli, mele, and poetry!

Kalo has been a secondary project focus in 2015. Secondary students have been working in lo`i kalo in Peaiki, Hanamā`ulu. Students are also making their own pōhaku ku`i `ai with help from a community volunteer. Kalo was the feature ingredient in the secondary fundraiser, Kanikawī, in December 2015.

### 3. Extracurricular Programs

#### After School Academic and Cultural Programs

Kawaikini offers **Ho`opākela**, its own on-site tutoring program, and provides online instruction in math and reading, which allows K-12 students to review, practice and strengthen basic skills. Ho`opākela Papa Keu is an additional academic program added to the already existing Ho`opākela afterschool program. This program hired certified teachers focusing on increasing specific reading, science and math skills that students are lacking. This occurs on Monday, Wednesday and Thursday each week for students in grades 7 and above. Ho`opākela is sponsored in part by Living Life Source Foundation for grades K-12, who is helping to provide supplementary programs, such as Mathletics and Lexia Reading.

**Mana Mele** is a Native Hawaiian Education project hosted by Mana Maoli. Mana Mele provides students an after school music education program, a mentorship program during school (gr. 7-12), and the availability of a mobile recording studio. The mentorship component of this project offers students experiences in the creation and production of local music. Kawaikini was fortunate to have help from DJ Yaris as a past mentor. Currently, Fred Aki is providing secondary students with music mentorship. The Mana Mele mobile recording studio is currently on Kaua`i and being shared among the Hawaiian-focus charter schools on island.



Mana Mele brought Kimi-e and Anuhea to visit Kawaikini!

**Hui Lopako**, Robotics, is an afterschool program offered to students from grades 5-8. It was started with the diligence of Leilani Spencer whose daughters participated in robotics competition with Island School. Kawaikini was initially gifted VEX starter kits, a monetary donation, and volunteers to mentor our students. In the past, Deana Slogger, a high school student and Robotics team member at Island School, has volunteered her time to mentoring our Hui Lopako students.

**Kaua`i Interscholastic Federation (KIF)**, high school students continue to participate as student athletes under KIF. An accommodation was granted for public charter school (PCS) student athletes to either participate with the DOE school in the locale of their PCS or with their home town school.

**'Aha Haumāna**, Student Council, is made up of representatives from grades 6-12. Our current Student Council president, Haunani Moody, also sits on the Hui Haumāna made up of representatives from other Hawaiian-focused charter schools across the State.

**High Tech Youth Network** is a program that began in Aotearoa about 10 years ago to provide pacific island students with a studio space to be creative and supported as they work with 21st century technology. HTYN aims to connect these studios, their staff and the communities they serve both physically and virtually to share knowledge and collaborate on meaningful projects that promote the cultural and creative capacities of these communities. Shane Cobb-Adams is Studio K's Producer, the studio at Kawaikini. The Studio is open to Kawaikini students in grades 5-12 and will possibly open up to students from other schools and in younger grades. The Office of Hawaiian Affairs is another supporter of this program. Future plans include: 1) Looking at utilizing some reading development software to assist students in utilizing computer and software to participate in some studio activities; 2) Looking to develop funding for June through December 2016; 3) High Tech Youth Network is planning a student summit on Kauai in 2016 which will be held at Camp Kahili. Students from studio and studio Waimea will be participating alongside of and international group of HTYN members from the 10 other studios across the pacific in and international student conference.



#### *D. School performance*

In SY2013-14, the State of Hawai`i DOE rolled out its new system of accountability as approved by a Waiver from the Federal Department of Education. The Strive HI replaced the previous system of AYP, Annual Yearly Progress, focused only on achievement as a measure of success. The current

Strive HI system incorporates the old system of achievement, and also includes other areas, such as student growth, absenteeism, closing the achievement gaps of high needs students and more.

For the 2014-2015 year, Kawaikini's Strive HI score put it in the category of "Continuous School Improvement." As a school in "Continuous School Improvement", no corrective actions are required.

In addition to monitoring its annual Adequate Yearly Progress (Strive HI) status (See *Appendix C*) as a way to assess the overall performance of the school, Kawaikini also uses a combination of indicators including test performance and professional development of faculty and staff. Each of these elements is briefly discussed below.

### Testing

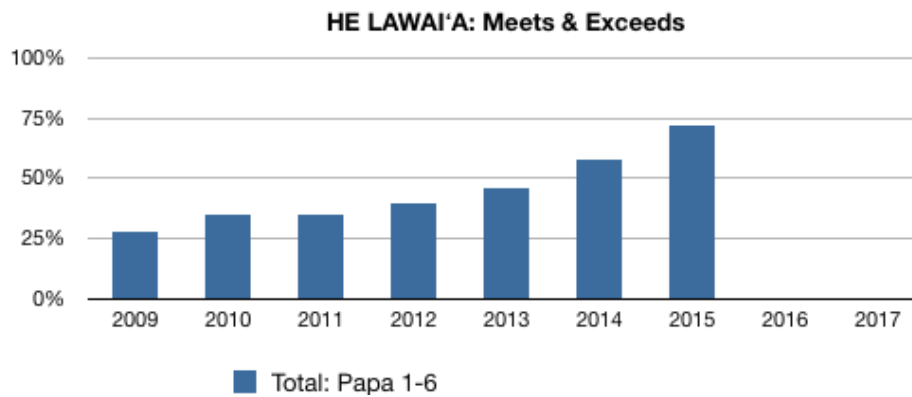
As part of its contract with the state and as proof of its own commitment to maintaining accountability, Kawaikini maintains a comprehensive program of testing. This past year, these include both State-required mandatory assessments, including the Hawai'i State Assessment (HSA) in English (for State mandated grade levels) and voluntary testing such as ACT, the Northwest Evaluation Association (NWEA) and He Lawai'a No Ke Kai Hohonu (Hawaiian language reading comprehension) that are used to provide diagnostic and evaluative data to help guide instruction.



In order to understand Kawaikini's test scores, it is important to note, that because our class sizes are so small, grade-level test data is easily impacted when a few students test either high or low compared to their classmates. Kawaikini's smaller grade size makes it difficult to extrapolate non-student-specific trends and tendencies from the data.

**He Lawai'a:** *He Lawai'a* is a K-12 'ōlelo Hawai'i reading comprehension test that consists of one Hawaiian narrative passage at each of twelve difficulty levels. As a student reads a passage aloud, his or her mistakes are noted by the teacher. Following the read-aloud portion of the test, the student is asked questions regarding the narrative's components such as the main idea and vocabulary. We currently use *He Lawai'a* in grades 1-6.

In the past seven years of *He Lawai'a* data (2009 - 2015) in grades 1-6, the amount of students that meet or exceed proficiency has steadily increased from 28% to 72%. See the appendix for more information.



In the Fall of 2015, Kawaikini began piloting a new version of He Lawai'a in grades 1-3. Scoring of the new version may be significantly different from the older version, therefore reporting of the scores may also change in the years to come.

**HSA (grades 3 & 4):** Between 2008 and 2011, students in grades 3 and 4 took the Hawai'i Aligned Portfolio Assessment (HAPA). However, in 2012, the HAPA was no longer allowed; instead the Hawai'i State Assessment (HSA) was translated for the students in Hawaiian immersion programs. Unfortunately, many problems were found in the translation and with the process that may put students in Hawaiian immersion programs at an unfair disadvantage. In Spring 2015, an initial pilot test was administered to Hawaiian immersion student statewide and it was followed up by a second pilot test period in Fall 2015.

**SBA (grades 5-8, and 11):** Over the last few years, the Hawai'i State Assessment (HSA) has been replaced with the Smarter Balanced Assessment (SBA). Kawaikini students took the SBA for the first time in Spring 2015. See the Appendix D for more information.

**NWEA (grades 5-12):** The NWEA is an adaptive computer-based assessment that provides student data within 48 hours. This assists teachers in making effective instructional decisions to help student learning. Kawaikini students in grades 5-12 take 3 portions of the NWEA which include, Reading, Math, and Language Usage. In the Fall 2015, students in grades 7 and 8 have also taken the Science portion for the first time. NWEA has been made available to Kawaikini through the generosity of Kamehameha Schools.



### Professional Development

During 2015, Kawaikini faculty and staff have taken it upon themselves to seek professional development opportunities to benefit not only themselves but the students and community they serve. This pursuit of professional development demonstrates these employees' commitment to self-development and professional excellence:

### Spring 2015

- Project-Based Instruction with Herb Lee and Kapono Ciotti (all kumu)
- Series of Hawaiian language lessons in 3 cohort groups with Keao NeSmith, Ph.D. (all staff)
- National School Lunch Training - K Bristol and S Rosenthal
- Lunch POS (Point of Sale) Equipment Training - K Bristol and S Rosenthal
- Avatar Wizards Conference - K Kaauwai
- Ware Group for Ho`opakela Tutors
- Title I Training - K Kaauwai
- BOE SAC - A Rogers
- Registrars Training - K Bristol
- Accreditation Visiting Team to Kanuikapono - K Smith
- Mathletics for Ho`opakela Tutors
- Healthroom Workshop - K Bristol
- Infinite Campus (New Student Attendance/Records system for 2016) - K Bristol

### Fall 2015

- Staff retreat at Kalapakī and Hulā `ia
- Language Education and Diversity Conference attended (‘Alohi Okamura, Kaliko Goo, and ‘Alohilani Rogers)
- Edivate with Dan Yahata (all kumu)
- Writing as Empowerment for Native Hawaiian Kumu and Haumāna with Alice J. Kawakami, Ph.D.
- National School Lunch Training - K Bristol and S Ka`auwai
- Highly Qualified Teacher Training - S Ka`auwai
- 504 Training - H Emmick and A Rogers
- Title I Training - K Kaauwai
- Working with Children - All Ho`opakela Tutors
- Working with Children II - All Ho`opakela Tutors
- Infinite Campus (New Student Attendance/Records system for 2016) - K Bristol

### *E. WASC Accreditation*

Why is accreditation important? Accreditation is important because accredited institutions are evaluated extensively. Accreditation also informs our entire school community that we provide high levels of performance and quality. We have more opportunity to attract and retain new students. Our graduates will also have more opportunities for scholarships. Our school will have greater opportunities for grants, including public and private funding. But also, accreditation requires continual self-evaluation, frequent reports, and periodic external review, so that we, and those who follow, can be assured that the educational quality of programs and services offered by Kawaikini, are current and reflect high standards of quality.



Kawaikini's Accreditation is for six years with a 1 day mid-term visit, which will occur in 2017. Our re-accreditation process will be in 2020. The accreditation committees include: Governance (Kimo

Perry), Human Resources (Lei`ilima Rapozo), Education (Dr. Liela Nitta), Health & Safety/Facilities (Jade Wai`ale`ale-Battad), Community of the School and Finance & Fundraising (Lois Andersson). Each committee has and continues to work on the Action Plans and Recommendations created by Kawaikini and added to by the Visiting Committee.

Kawaikini itself determined three important areas for further improvement:

1. Develop a Scope (to what depth) and Sequence (which order) for each core subject area (Math, Language Arts, Hawaiian Language Arts, Social Studies and Science), in alignment with Ola Pono, Manokalanipō and Ke Ala `Ike curriculum strands.
2. Develop a system of formative and summative assessments aligned with ESLRs as well as the curriculum scope and sequence.
3. To create and implement a development plan to diversify revenue sources beyond state per-pupil allotments and develop greater access to non-per-pupil funding.

The Visiting Committee, in addition, recommend two more action plan items:

1. Determine enrollment sustainability plan.
2. Define and clarify leadership structure to support the school into the future.

The task of the committees each year is to review the action plan activities and recommendations, and begin to complete each activity. Each year, a progress report of actions completed is submitted to the WASC organization. In 2016, while working to complete the activities, we will also be planning for the Mid-Term Visit in 2017.

**`A`ohe hana nui ke alu like kakou** (No task is too big when done by all). We need everyone's help in being on a committee and or helping in some way to accomplish the activities in each committee. When you are called upon, please say "YES" to helping out the committees. By the way, we are looking for a new chair for the Community of the School Committee and members on all committees.

#### *F. Kawaikini's campus and facilities*

##### General state of facilities

The Kawaikini facilities are located on approximately 10 acres of land leased from the University of Hawai'i and Kaua'i Community College. Current classroom facilities consist of newly installed portable modular classroom buildings, energy efficient Smart Buildings, modular and cottage administrative buildings, two modular restroom buildings, and two storage containers. Interim tents are used for cafeteria and meeting purposes. Grounds of the school include a playground area in the lower campus, a garden for student projects, and a semi-enclosed grass field in the upper campus area.

##### Improvements during 2015

In 2015 Kawaikini enjoyed a second full school year with the classrooms and administrative buildings that were installed in 2013. In 2015, the major project was the asbestos removal from the administrative building offices. Kawaikini became an asbestos-free campus with the completion of the asbestos removal project conducted by Supporting the Language of Kaua`i, Inc. There was also



an emphasis on small improvement projects around school including new plantings, adding a cattle gate fence to entry of campus for improved security, installing new Kawaikini signs, adding additional solar lighting, and creation of a new school garden as a result of a Gardening Certificate Training Program provided by Malama Kaua'i. This was the second year that the school has had dedicated maintenance and custodial staff for the upkeep of the buildings and campus grounds, which has helped improve the overall attractiveness and functionality of the school's grounds.



## Evolution of Kawaikini Facilities

**Year 1: Tents**



**Year 2: Trailers**



**Year 3: Construction Begins**



**Year 4: Site Work (Septic System & PF)**



**Year 5: KS Portable Modular Buildings shipped from O'ahu to Campus**



**Year 6: Roadwork, Water Lines, Electric & Building Installation**



**Year 7: Parking area, skirting, fencing**



**Year 8: Signage, maintenance**



## Plans for 2016

Plans for the upcoming calendar year include continued and more concerted emphasis on building and campus upkeep and maintenance, and small but vital campus improvements. Larger projects include a complex multi-institutional project to provide solar electricity throughout campus, planning and design of a campus playground, and moving forward with plans for the Kawaikini multi-purpose building.

### *G. Financial condition*

#### Fiscal Year July 1, 2014 – June 30, 2015

Final Fiscal Year statements for 2014-2015 audit report has been prepared by Jay Miyaki, CPA, LLC and can be seen in *Appendix F*. This report was positive and showed no auditor findings for the third consecutive year.

#### Fiscal Year July 1, 2015 – June 30, 2016

The current fiscal year produced a 3% increase in per-pupil funding versus the previous year. This can be seen in the figure below which shows state per-pupil funding since 2007, the year before Kawaikini opened:

**State of Hawai'i per-pupil funding by year**

School Year	Kawaikini Year of Operation	Per-Pupil (\$)	Change (%)
2007-2008	***	8,149	Baseline
2008-2009	Year 1	7,588	-7.40
2009-2010	Year 2	5,530	-37.20
2010-2011	Year 3	5,335	-3.70
2011-2012	Year 4	5,768	+8.10
2012-2013	Year 5	5,800	+.50
2013-2014	Year 6	6,131	+5.71
2014-2015	Year 7	6,325	+3.16
2015-2016	Year 8	6,520	+3.08

Kawaikini's total operational budget for the 2015-2016 school year is approximately \$1,438,000, which comes from a combination of revenue from state, federal and private funding sources. Kawaikini's fiscal state is healthy, although it was a very challenging year due to changes in our financial management and enrollment. The school's administration was able to control expenses above and beyond typical measures that brought improved results to the bottom line. The school was fortunate to transition the financial systems to be more efficient which will in turn provide financial stability.

#### Outlook for 2016-2017

The outlook for fiscal 2016-2017 continues to be challenging but manageable. The school intends to maintain its operating reserves at no less than 5% of operating budget and to continue its practice of maintaining a facilities fund to support construction and renovation projects on campus. Kawaikini

will continue to maintain its highest level of accountability and to utilize and find additional resources through grants, donations, and other sources. Kawaikini is also collaborating with Supporting the Language of Kaua'i to install photovoltaic panels on campus, which is projected to save approximately \$30,000 per year.



#### *H. Parent participation*

Parent involvement is a vital to the success of Kawaikini NCPCS. Our parents continually demonstrate their commitment to the school through numerous ways. Parents take on a variety of kuleana to support the students and staff of Kawaikini such as:

- Providing at home support for homework and 'ōlelo Hawai'i.
- Attendance of parent/teacher conferences.
- Attendance of school-wide quarterly meetings.
- Working at Lā mālama i ke kula.
- Serving as a member of the parent organization Nā Hulu Makua.
- Contributing to fundraising activities.
- Participating in governance by serving on the Governing Board.
- Taking advantage of extra-curricular enrichment activities (Science nights, Culture nights, etc.)
- Performing "hands-on" kuleana on campus: office work, classroom support, assisting with lunches, etc.
- Serving as 'Elele Makua communications representative between teachers and parents.



Parents are also encouraged to attend Papa Ho'ona'auao language enrichment. These classes allow parents to further support their child's bilingual education as well as deepen their personal cultural awareness.



organizations and individuals. For 2015, specifically, we were fortunate to receive the following donations and contributions to our school:

- Financial support provided for facilities, school improvement, and accreditation initiatives (Contributor: Kamehameha Schools)
- Technical and financial support provided by Kawaikini's affiliated non-profit, Supporting the Language of Kaua'i, Inc.
- Board of Education Listening Tour meeting held at Kawaikini.
- State Public Charter School Commission regular meeting was held at Kawaikini.
- Blessing of Studio K, a Technology studio after school program for students, grades 5-12, involving Office of Hawaiian Affairs Trustee Dan Ahuna and Hi Tech Youth Network President Mike Usmar.
- Kamehameha Schools CEO Livingston "Jack" Wong and his administrative team visit Kawaikini - highlighting the Literacy program, Accreditation process, KS portable buildings, broad support of Kawaikini charter school and requesting KS' continued support for future endeavors.
- US House of Representative Tulsi Gabbard visits Kawaikini highlighting her interest in Charter School education.
- Okinawan students and teachers visit Kawaikini via a cultural exchange program with Professor Brian Yamamoto of Kaua'i Community College.
- Foster Grandparent provides two kupuna to assist students in the classroom.
- Mana Mele After School Program at Kawaikini for Papa 5-8 by Edd Cook.
- Mana Mele Mentorship Program with DJ Yaris and Fred Aki.
- Kawaikini continues to partner with Liko A'e Scholarship Program as a site for scholarship participants.
- Hui Lopako (Robotics Club) After School Program meets monthly, led by Deana, a student at Island School.
- Kamehameha Schools College Workshop Series at Kawaikini with Kimo Chun.
- Royal Order of Kamehameha meets regularly at Kawaikini.
- Hawai'i Technology Academy Charter School uses Kawaikini's facilities for their extended learning.



Mahalo to those who helped with Kanikawi!



Community fence building project at Kawaikini

- Kanikawi (Taste of Kawaikini), a Secondary Fundraiser.
- Tim Reis is currently working with 7-12 graders to make pōhaku ku'i 'ai.
- 'Anakē Natasha Perry teaching an after-school Russian language class.
- 'Anakē Ka'eo Bradford teaching lei hulu to the graduates.
- 'Ekela and Pōmaika'i Crozier, Hōkūlani Cleeland, Kekoa Harmon, Haili'ōpua Baker, Isaiah Ka'auwai, Kawai'olu Torio volunteered their time to sit on the Kūpale panel for 2015 graduates.
- Matt Stevenson at UH CTAR.
- Various huaka'i and donations from the Asquith 'Ohana at Keālia Farm.
- Keaka Flores with help on Secondary Camps and at Peaiki.
- Lady Ipo and 'Anakē Honey Ho'omanawanui help at Kanikawī, Secondary Fundraiser.
- Ware Group Training for Ho'opakela Tutors.
- Brett of Roundhouse One (Project Frog).



**Papa Mala'ao visits PMRF and McGruff the Crime Dog.**

### Kawaikini in the community

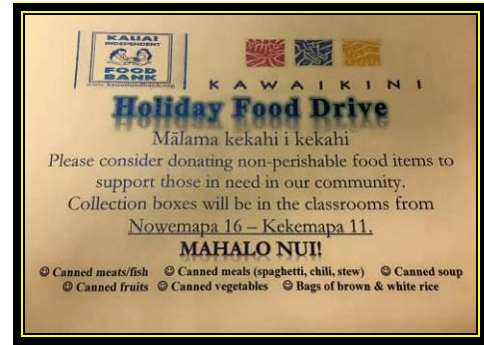
Kawaikini's commitment to being a positive force in the community can be seen in several of the activities that it has conducted. Some examples include:

- Participation of Kawaikini students in Eō, E Lili'u Song competition.
- Service learning projects in lo'i at Waipa, Kealia, Makaweli, Ko'olau, Alekoko, Ha'ena, Pea'iki, and Anahola.
- Participation in Prince Kūhiō commemorative celebrations in Anahola.
- Participation in the Lights on Rice parade.
- Food Drive to benefit Kaua'i Food Bank.
- Kawaikini participating in plastics, cardboard, paper and Hi-5 recycling as well as e-Recycling monthly.
- Ka'ohu Gutierrez-Kelley participating in KIF Football at Kapa'a High School.
- Keaukahi Mau-Espirito participating in KIF Canoe Paddling at Kapa'a High School.
- Haunani Moody participating in KIF Bowling at Kapa'a High School.



**Keiki sing for kupuna during the holiday season**

- Malina Wai`ale`ale-Battad portrays Princess Ka`iulani at Story Book Theatre.
- Kawaikini students participate in the KALO Festival Art Contest.
- Secondary students attend the College and Career Fair.
- Kawaikini haumāna and kumu sing at The Cliffs and Princeville and Kapa`a Middle School Christmas Fair at Christmas.
- Kawaikini haumāna and kumu share mele and hula at Kiahuna Homeowner’s Association Annual Meeting.
- Other contributions have been made by many organizations and individuals who have offered such services as these:
  - Literacy program for K-3 provided by Kamehameha Schools.
  - Living Life Source Foundation provides financial and technical assistance to Kawaikini through Ho`opākela After School Program. Living Life Source Foundation also provides college and career programs for Kawaikini middle and high school students.
  - Mālama `Āina Foundation brings Makawalo o Nā Kumu - providing standards-based Hawaiian cultural lessons for grades 6-8
  - Robotics After-School Program provided by Deana, a student from Island School.
  - Mana Maoli’s Mana Mele After School Program, Papa 5-8, with Edd Cook; Mana Mele Mentorship Program, Papa 5-8, with DJ Yaris and Fred Aki.
  - Ho`ola Lahui Hawai`i on Health, Nutrition, and Physical Education for Papa M-12.



Kawaikini’s annual food drive



Students peel taro with kupuna

*Appendix E* provides a more comprehensive list of our institutional and other partners. We appreciate the support of these individuals and institutions and encourage our school community to remember the graciousness of those who have so generously given of themselves to help our school.

#### J. Kawaikini Strategic Plan

In order to ensure that the development of the school is being guided by a clear set of strategic priorities, Kawaikini’s Local School Board developed its Kawaikini 2012-2016 Strategic Plan. Now, the Governing Board continues to make progress on implementing the activities, benchmarks and timelines of the Strategic Plan. And as the 2012-2016 Strategic Plan is coming to an end in December 2016, Kawaikini leadership will engage the Kawaikini community in creating the next five-year



Strategic Plan. We will celebrate our accomplishments and include those actions that need further work into the new plan. This Action Plan, current and new, will ensure that we are making progress in implementing the Strategic Plan and Kawaikini's Mission and Vision.

#### **IV. HIGHLIGHTS OF 2015**

The 2015 calendar year was another eventful one as Kawaikini completed our sixth full year of operations and began our seventh school year. Highlights of key activities conducted during this time include:

##### **A. First quarter: January – March 2015**

- Halawai Nā Hulu Makua - monthly
- Halawai Papa Alaka'i (Governing Board) - monthly
- Halawai SLK (Supporting the Language of Kaua'i) - monthly
- Halawai Prince Kūhiō Celebration
- Halawai Kula - Kulana Kula (State of the School)
- Na Hulu Makua provides dinner before Halawai Kula - Kulana Kula
- Halawai with Ware Group
- Halawai Makua/Kumu (Parent/Teacher Conferences)
- Halawai HAO (Hawaiian Agencies & Organizations) - monthly
- Halawai Accreditation Chairpersons & Coordinators - quarterly
- Halawai Kamehameha Schools CMP Grant
- On-Site Training - Point of Sale Equipment
- Halawai KS CMP Goals
- Halawai KS Po`o PLC
- Halawai Living Life Source Foundation
- Halawai Title I
- Halawai Hawai'i Public Charter School Network Leaders
- Halawai SSC (Student Services Coordinators)
- Halawai `Aha Kauleo
- PD - Papa `Olelo Hawai'i for all Kumu and Limahana
- PD - Health Room (SASA)
- PD - Kawaikini Website
- Huaka'i - Papa 3-4, 9-12 to Alekoko
- Huaka'i - Papa 5-6 to Ha'ena
- Huaka'i - Papa Malaa`o to Makaweli
- Huaka'i - Papa 7-12 to Library
- Huaka'i - Papa 1 to Library
- Huaka'i - Papa Malaa`o -12 to Po`ipu for Makahiki Games
- Huaka'i - Papa 3-4 to Moloa`a
- Huaka'i - Papa Malaa`o to Lawai Kai
- Huaka'i - Papa 5-6 to Lihu'e Library
- Huaka'i - Papa 9-12 to Uncle George's Farm
- Huaka'i - Papa 7-8 to Waipa
- Huaka'i - Papa 5-6 to Malama `Aina Foundation
- Huaka'i - Papa 9-12 with Kimo Chun
- Huaka'i - Papa 5-6 to Regency @ Puakea
- Huaka'i - Papa Malaa`o to Nounou
- Huaka'i - Papa 9-12 to Alekoko
- Huaka'i - Papa 5-6, 9-12 to Alekoko
- Huaka'i - Papa 3 to Ka`aka`aniu
- Huaka'i - Papa 4-6 to Makaweli
- Huaka'i - Papa 7-12 to Kekaha



**Makahiki 2015**



**Kumu `Alohi with haumana**



**Kumu Uluwehi and students**

- Huaka`i - to Pea`iki
- Help Build Music
- Emergency Procedures - Fire Drill, Evacuation and Lockdown
- Safety Committee Meeting - monthly
- Pono Choices
- Studio Mana Mele Afterschool Program weekly
- Ho`opakela Afterschool Program weekly
- Hui Lopako (Robotics Club) After School Program weekly
- Opening of Studio K - a branch of High Tech Youth Network - daily
- Bully Committee Meeting - evolved to Halawai Lawena (Behavior Meeting)
- `Aha Ho`ohanohano Haumana (Student Award Assembly)
- Hawai`i Technology Academy meets at Kawaikini
- Skirting Painting by Makua
- Kahu visits Preschools on Eastside for SY1516 Enrollment
- Kahu visits Preschools on Westside for SY1516 Enrollment
- SY1516 Enrollment Session for New Students `Ohana
- Kahu visits each papa at Kawaikini to discuss Bullying
- ACT Test Writing - Papa 11
- ACT Test EXPLORE - Papa 8-9
- ACT Test PLAN - Papa 10
- Ku`i Ka Lono (Hawaiian Charter Schools Youth Conference)
- School Policies uploaded to Kawaikini website
- Scholarship Worker Volunteering at Kawaikini
- Prince Kūhiō Celebration Dinner Event at Po`ipu
- Artist in the School Program (Kumu Mauliola Cook) - weekly



Students working together on a project



Kawaikini's first annual Prince Kuhio event was held to benefit the playground project on campus

#### B. 2<sup>nd</sup> Quarter: April – June 2015

- Halawai Na Hulu Makua - monthly
- Halawai Papa Alaka`i (Governing Board) - monthly
- Halawai SLK (Supporting the Language of Kaua`i) - monthly
- Halawai Kula - Hopena Makahiki (End of Year)
- Na Hulu Makua provides dinner before Halawai Kula - Hopena Makahiki
- Halawai HAO (Hawaiian Agencies & Organizations) - monthly
- Halawai Accreditation Chairpersons & Coordinators - quarterly
- Halawai Accreditation - Education Committee
- Halawai KS SIS
- Halawai KS Po`o PLC
- Halawai Living Life Source Foundation
- Halawai Title I
- Halawai Hawai`i Public Charter School Network Leaders
- Halawai SSC (Student Services Coordinators)
- Halawai Lawena (Behavior Meeting)
- Halawai Finance/Fundraising
- Halawai `Aha Kauleo
- Halawai KS Literacy Instructional Services
- Halawai Governing Board - Human Resources Committee



Talent show and movie night

- SY2015-16 Lunch Service Planning Meeting
- Safety Committee Meeting - monthly
- PD - State Commission on Data
- PD - Pono Choices
- Huaka`i - Papa Malaa`o, 7-12 to Alekoko
- Huaka`i - Papa to Kilauea
- Huaka`i - Papa 7-12 to Airport
- Huaka`i - Papa 1 to Kekaha Community Gardens
- Huaka`i - Papa 2, 7-12 to Alekoko
- Huaka`i - Papa 5-6 to Lihue Library
- Huaka`i - Papa 3-4 to Ko`olau (2)
- Huaka`i - Papa 5-6 to Peer Mediation
- Huaka`i - Papa 7-12 to Lihu`e Library
- Huaka`i - Papa 7-12 Koke`e Camping Trip
- Huaka`i - Papa 3-4 to Namahana
- Huaka`i - Papa 2 to Recycling Center
- Huaka`i - Papa 3-4 to Ka`aka`aniu Noni Farm
- Huaka`i - Papa 3-4 to Ko`olau (2)
- Huaka`i - Papa 7-8 to Pea`iki
- Huaka`i - Papa 5-6 to Wailua Research Station
- Huaka`i - Papa 5-6 to Ha`ena (2)
- Huaka`i - Papa Malaa`o to Anahola
- Huaka`i - Papa 9-12 with Kimo Chun
- Huaka`i - Papa 1-2 to Ahupua`a of Puna
- Huaka`i - Papa M-4, 8-10 to Convention Hall
- Huaka`i - Papa Malaa`o-12 to Salt Pond - End of Year Outing
- Huaka`i - Papa 7-12 to Prep Imu
- Huaka`i - Papa 7-12 to Open Imu
- Huaka`i - Papa 5-6 to Koke`e
- Huaka`i - Papa 2 to Wailua Monastery
- Huaka`i - Papa 5-6 to Kealia - Asquith `Ohana Lo`i
- NHEA (Native Hawaiian Education Summit)
- Alu Like Celebrates 25 years Lu`au - Anahola
- Health Fair - Kawaikini and Ke Kula Ni`ihau Papa 5-12 @ Kawaikini - sponsored by Living Life
- Source Foundation and Ho`ola Lahui Hawai`i
- Emergency Procedures - Fire Drill, Evacuation and Lockdown
- Studio Mana Mele Afterschool Program weekly
- Ho`opakela Afterschool Program weekly
- Hui Lopako (Robotics Club) After School Program weekly
- Studio K - open daily
- `Aha Ho`ohanohano Haumana (Student Award Assembly)
- Hawai`i Technology Academy meets at Kawaikini
- SBAT (Smarter Balance Assessment Test) - Makemakika
- SBAT (Smarter Balance Assessment Test) - `Olelo Pelekania (English)
- EOC (End of Course) Exams
- Papa `Olelo Hawai`i for all Kumu and Limahana
- Papa Ho`ona`auao Makua by Kumu Ka`e`e
- Kupale (Senior Project Defense)
- Hawai`i Public Charter School Network Student, Kumu, Limahana, `Ohana Interviews
- Hawai`i Public Charter School Network Awards Dinner - Kawaikini awarded Best Practices in
- Working with Community Partners
- `Aha Na`auao (Academic Conference) - Papa Malaa`o-12
- SBA Makeup Testing
- HSA Test - Science



Sixth graders celebrate their promotion to Middle School



Students at Ho`ike`ike

- Testing - Pae 5-6
- NWEA Testing - Pae 5-12
- Teacher and Staff Appreciation Week
- WASC (Western Association of Schools and Colleges) Annual Write-up
- Artist in the School Program (Kumu Mauiola Cook) - weekly
- La Ho`ike`ike (Culminating School Event)
- La Hemo Kula (Graduation)
- KS CSI (Continuous School Improvement) End of Year Ho`ike



Kawaikini's class of 2015

### C. Third quarter: July – September 2015

- Halawai Na Hulu Makua - monthly
- Halawai Papa Alaka`i (Governing Board) - monthly
- Halawai SLK (Supporting the Language of Kaua`i) - monthly
- Halawai Kula - Ho`olauna `Ohana (Family Orientation)
- Na Hulu Makua provides dinner before Halawai Kula - Ho`olauna `Ohana
- Halawai HAO (Hawaiian Agencies & Organizations) - monthly
- Halawai Accreditation Chairpersons & Coordinators - quarterly
- Halawai KS SIS
- Halawai KS Po`o PLC
- Halawai Title I
- Halawai Hawai`i Public Charter School Network Leaders
- Halawai SSC (Student Services Coordinators)
- Halawai `Aha Kauleo
- Halawai KS Literacy Instructional Services
- Halawai NLN (Na Lei Na`auao) (4)
- Halawai KS Ho`olokolike
- Halawai Papa Huaka`i i Aotearoa- Monthly
- Halawai OHA Trustees
- Halawai CS Commission
- PD - Department of Education 504 Training
- Webinar- Charter Schools
- PD - Infinite Campus Training (new Student Information System)
- PD - National School Lunch Program Fiscal Training
- PD - National School Lunch Program Operations Training
- Huaka`i- Papa 5-6 to Hā`ena (2)
- Huaka`i- Papa 7-12 to Hale Waihona Puke (3)
- Huaka`i- Papa 7-12 to Lo`i (4)
- Huaka`i- Papa 3-4 to Ko`olau (2)



Parents attend back-to-school quarterly meeting



Students receive awards for their good work

- Huaka'i- Papa M, 1 & 2 to Fern Grotto, Lydgate, Hikinaakalā
- Huaka'i- Papa 7-12 to Koke'e (Ho'omoana)
- Huaka'i- Papa 3-4 to Namahana
- Huaka'i- Papa 5-6 to Aloha 'Āina Juice Bar
- Huaka'i- Papa M, 4, 5-6 to Makaweli
- Huaka'i- Papa M-6 to Kapa'a Beach Park Powwow
- Huaka'i- Papa M, 5-6 to Asquith Lo'i
- Huaka'i- Papa 5-6 to Kamalani Park
- Papa 'Ōlelo Lukia (Russian Language Class) - weekly
- Sparky Kīnai Ahi (Fire Department) visits Kawaikini
- Eō E Lili'u
- Papa Ho'ola Lāhui Hawai'i @ Kawaikini



Students performing hula

#### D. Fourth quarter: October – December 2015

- Halawai Na Hulu Makua - monthly
- Halawai Papa Alaka'i (Governing Board) - monthly
- Halawai SLK (Supporting the Language of Kaua'i) - monthly
- Halawai Kula - Kipa Kula (Open House)
- Na Hulu Makua provides dinner before Halawai Kula - Kipa Kula
- Halawai HAO (Hawaiian Agencies & Organizations) - monthly
- Halawai Accreditation Chairpersons & Coordinators - quarterly
- Halawai Charter School Commission - biweekly
- Halawai KS SIS
- Halawai KS Po'o PLC
- Halawai Title I
- Halawai Hawai'i Public Charter School Network Leaders
- Halawai SSC (Student Services Coordinators)
- Halawai `Aha Kauleo
- Halawai KS Literacy Instructional Services
- Halawai KS Ho'olakolike - monthly
- Halawai KS Scholars
- Halawai Po'o Kaiapuni
- Halawai NLN (Na Lei Na'auao)
- Halawai Safety Committee
- Halawai CRA Interim Growth
- Several SY2015-16 Lunch Service Planning Meetings
- PD - Department of Education 504 Training
- PD - Schools of the Future Conference
- PD - Infinite Campus Training
- Huaka'i- Papa 7-12 to Lo'i (2)
- Huaka'i- Papa 5-6 to Puhī Park/Līhu'e Library (2)
- Huaka'i- Papa 7-12 to Keālia (2)
- Huaka'i- Papa 1, 4 to Keālia Asquith Farm
- Huaka'i- Papa 3-4 Kilauea/Kāhili
- Huaka'i- Papa 5-6 Nounou
- Huaka'i- Papa M, 2, 3 to Keālia Asquith Farm
- Huaka'i- Papa 5-6 to Asquith Lo'i
- Huaka'i- Papa 5-12 to Lo'i Peaiki
- Huaka'i- Papa 3-4 to Waiakalua/Ka'aka'aniu
- Huaka'i- Papa 5-6 to Hā'ena (Ho'omoana)
- Huaka'i- Papa 1-2 to 'Alakoko, Nāwiliwili, Kalapakī
- Huaka'i- Papa 7-12 to Hana Imu (2)



Teachers, parents, and community members help to install fencing on campus



Students dressed to scare at the Kealia Halloween event

- Huaka'i- Papa 3, 4, 5-6 to Regency Puakea (Hīmeni)
- Huaka'i- Papa 6-8 to Mālama 'Āina Foundation
- Huaka'i- Papa 3-4 to Kilauea Loop Trail
- Huaka'i- Papa M-6 to Wilcox Haukapila (Hīmeni)
- Huaka'i- Papa 7-12 to Kaua'i Beach Resort Pā'ina Kalikimaka
- Papa 'Ōlelo Lukia (Russian Language Class) - weekly
- Flu Shot Clinic @ Kawaikini
- Kiahuna Homeowners Association Fundraiser for Kawaikini @ Grand Hyatt
- Ho'ola Lāhui Hawai'i @ Kawaikini
- Lights on Rice St. Parade
- Kanikawī (Kawaikini's own Taste of Kaua'i) Secondary Fundraiser - focus on Kalo in all dishes
- BOE Listening Tour @ Kawaikini
- Papa 3-6 Christmas Caroling at Puakea Regency
- Artist in the School Kumu Mauiola Cook @ Kawaikini
- Papa 3-6 Christmas Caroling at Wilcox Memorial Hospital Long Term Care
- Kawaikini sings at Kapa'a Middle School Holiday Fair
- The Cliffs @ Princeville Performance - Christmas Caroling
- 'Aha Na'auao (Academic Conference) Kula Waena/Kula Ki'eki'e



Making the float for Lights on Rice

## V. KEY PRIORITIES

### Key priorities for 2016

These include some that have been carried over from previous years as well as those that are new initiatives that we have begun working on and are now identifying as priorities:

1. Facilities – Kawaikini will continue to work on expanding and improving its facilities, including: (1) installing photovoltaic panels to reduce energy costs, (2) working with Supporting the language of Kaua'i (501c3) to develop architectural and financing plans for the Kawaikini multi-purpose building; (3) conducting other smaller campus improvement projects as they arise.
2. Mission and Vision – Kawaikini will involve all stakeholders to bring understanding and clarification of the school's mission and vision. Any substantive changes, if needed, will be made.
3. Secondary program – To address our accreditation requirements and strengthen the school's educational offerings, we will look closely at our secondary program to determine the best structure, enrollment level, and overall educational possibilities. We will also be looking at various issues of student and faculty retention and recruitment which are key for the viability of this program.
4. New Strategic Plan – Kawaikini will be working on creating the next Strategic Plan and Action Plan with specific aligned activities and benchmarks to assess progress towards the Plan's implementation. This plan will guide the school's development over the next five years and will ensure that the school is developing in accordance with its original intent, the Mission and Vision. The current Strategic Plan is set to expire in December 2016.

5. Accreditation – As we have completed 1.5 years of Accreditation in 2015, we will be continuing to work on the recommendations and Action Plan. While we prepare an annual progress report, we are also planning for the one-day mid-term visit in June 2017. The Action Plan items include:

- Develop a Scope and Sequence for each core subject area (Math, Language Arts, Hawaiian Language Arts, Social Studies and Science), in alignment with Ola Pono, Manokalanipō and Ke Ala 'Ike curriculum strands.
- Develop a system of formative and summative assessments aligned with ESLRs as well as the curriculum scope and sequence.
- To create and implement a development plan to diversity revenue sources beyond state per-pupil allotments and develop greater access to non-per-pupil funding.
- Sustainability of the Secondary Program – creating a plan to sustain the enrollment, faculty and program
- Define and clarify leadership structure to support the school into the future.

6. School protocols – The Governing Board and administration are moving to develop a consensus within the school community as to those practices that are to be conducted as a school-wide expectation as well as to develop procedures for accommodating increasingly diverse perspectives of family, students and staff into the future.



## **VI. CONCLUSION**

Since its inception, one of the strengths of Kawaikini has been the amazing support and hard work of its community: parents, staff, students, and supporters from the community at large. On any given day you will see so many people on campus giving their time and effort to help the school. Now in our eighth year, we have seen Kawaikini face and overcome many forms of adversity over the years. In the past year, especially, there were challenges that tested the strength and resolve of our school community as we continue to work towards our mission of perpetuating our language and culture. Working closely together we may sometimes feel that the strain of our task has become difficult. In these times it's important to remember the purpose that unites us all, and to never lose sight of our common goal. Working together and emphasizing our shared values as a school community, we are stronger than we can be as individuals. While specific people, things and ideas may come and go along the way, it is community and culture that endure.





## **APPENDIX A: GOVERNING BOARD BIOS**

**Jewel Rapozo** (President) - Jewel is a Kawaikini parent and a former Pūnana Leo parent. She is the office manager at Līhu'e United Church. Jewel has been part of the immersion program since 2008 and her term will expire June 2017.

**Leilani Spencer** (Vice President) - A graduate of New York University, Leilani has been an Immersion parent since 1999 and has served on the Board since 2008. She was the Project Facilities Manager overseeing infrastructure and building installation at the Kawaikini Campus. Leilani is the current Kaua'i Program Coordinator for The Family Hui. Her term will expire in June 2016..

**Ray Blouin** (Treasurer) - Ray Blouin is managing the Aston Aloha Beach Hotel and is responsible to transform the property into the new Hilton Garden Inn Kauai, where he has been fortunate to hold this position since February 1, 2008. He brings expertise in the area of managing employee relations, recruitment, selection, development and bottom-line financial responsibility. He serves on the board in honor of three special individuals and friends who have inspired him to serve the Hawaiian community: Ilei Beniamina, Kale Kau'i, and Ipo Kahaunaele. Ray's term ends June 2017.

**Karen Leilehua Rivera** (Secretary) - Affectionately known as `Anake Leilehua, has joined the board in September 2015. `Anake Leilehua is the Kauai District Sales Manager for Hawaiian Airlines and a Kauai Chamber of Commerce member. She has served on boards at Punana Leo, Kula Kaiapuni, and Kapaa Pop Warner, just to name a few. `Anake Leilehua brings her experiences and relationships within the community to fulfill Kawaikini's goals, missions, and vision. `Anake Leilehua has been involved with immersion program since 1995. She lives in Līhu'e with her husband, Marvin. Her term ends June 2018.

**Lei'ilima Rapozo** - Lei'ilima has served on the board since 2012. She is a parent and former Director of Pūnana Leo o Kaua'i. She brings expertise in business management and community relations. Her term expires June 2015.

**Lou Nishida** – Lou is a former associate member of the Governing Board who took the initiative to serve as a full member in 2014. He lives in Wailua Homestead where he farms tropical flowers, papaya, banana and other fruit trees. Lou graduated from Kapaa high school, then later went to Kauai Community College and graduated with an associates degree in Auto Body/Mechanics. He now works at University of Hawaii for the State in agriculture. Lou is also active with his wife Marci as parents and supporters of the Nā Hulu Makua parent group at Kawaikini. Lou's term ends June 2017.

**Kumu Nāmomi McCorriston** was born and raised on Kaua'i and she currently works as a Kumu Alaka'i for Kawaikini's Papa 2. She has previously taught at Pūnana Leo o Kaua'i and Ke Kula Kaiapuni o Kapa'a. Kumu Nāmomi holds a BA degree in Hawaiian Studies and an Elementary Teaching License from Brigham Young University Hawai'i, where she also served as the President of the Hawaiian Club and minored in Travel Management. She is an independent representative for Primerica Financial Services and currently holds the position of Division Leader. Kumu Nāmomi is fluent in 'Ōlelo Hawai'i. She is also a member of the Kawaikini's Local School Board. She is a mother of 4 children. She is a dedicated educator with a passion for teaching Hawaiian culture and language. She was appointed to serve out the vacated term of 'Anela McGerity, which expires June 2016.

**'Alohilani Okamura** holds a Bachelor of Education – Social Studies degree and a Masters degree in Educational Foundations from the University of Hawai'i at Mānoa, and also an Ed Doctorate degree in Urban Education from University of Southern California – Rossier School of Education. She has taught in various public and private middle and high schools, including a charter school, Kanu o ka 'Āina. Kumu

'Alohi is the Kumu 'Ōlelo Hawai'i as well as the Kumu Pili Kanaka (Social Studies) – Secondary Program, pae 7-12. She has previously taught English, Social Studies, Hawaiian Language and Hawaiian Studies at other educational institutions. Her term ends June 2018.

**Samuel K. Ka'auwai** (Ex officio, non-voting) – Executive Director Kaleimakamae first began serving on the board in 2008 and most recently came aboard as its Executive Director representative. He holds a B.A in Business Administration, Management and Accounting from The College of Idaho and Professional Diploma in Elementary Education from University of Hawai'i Manoa as well as a Master of Arts (Major: Teaching, Specialization: Reading) degree. He has taught Hawaiian Language immersion education for over 16 years and currently serves as Executive Director at Kawaikini NCPCS. In 2014 he received a Masters degree in Educational Leadership from Chaminade University. As ex-officio, non-voting member, his term does not expire.

-The Nu'ukia-  
We Envision a thoughtful,  
Knowledgeable, and Healthy  
community where the  
languages , beliefs, and practices of  
the indigenous people of  
Hawaii have become  
Instinctive

## APPENDIX B: FACULTY AND STAFF BIOS

### ***Nā Limahana o Kawaikini***

#### **Po’o Kula / Kahu (Executive Director)**



**Kahu Samuel Kaleimakamae Ka’auwai** is the Kahu or Po’o Kula (Executive Director) of Kawaikini, since 2011. He holds a B.A in Business Administration, Management and Accounting from The College of Idaho and worked in the retail sector and hotel industry for 12 years. Thereafter, he pursued a Professional Diploma in Elementary Education from the University of Hawai’i Manoa and also holds a Master of Arts (Major: Teaching, Specialization: Reading) degree from National University. He is currently completing a Master’s Degree in Charter School Educational Leadership Administration. Kahu Ka’auwai taught in the Hawaiian Language immersion education first at Kapa`a Elementary since 1995, and then at Kawaikini in 2008, in various combinations of grades 3-6. He has been a past, and now current, Choir Director at his church for over 25 years and is also a board member there. Kahu was honored in March as “2014 Educator of the Year” by the Native Hawaiian Education Association.

#### **Po’o Kumu (Academic Director)**



**Kumu Malia ‘Alohilani Rogers** is the Academic Director K-12. She has taught in the field of Hawaiian language education for over 20 years, where she has taught at the elementary, middle school, adult education and community college level. She has helped develop and translate materials used in the Hawaiian language education program. Kumu ‘Alohilani has a BA in Hawaiian Language from the University of Hawai’i and certification in elementary education. She is currently working on a Masters in Public Charter School Administration. She is also on the Board of Directors of ‘Aha Punana Leo. Her goal is to see the revitalization of the Hawaiian Language and culture here in Hawai’i through the education of our kamali’i, with a specific emphasis on Kaua’i. She enjoys spending time with her ‘ohana and reading, especially stories and articles from old Hawaiian Language newspapers and books.

### **Nā Kumu Alaka’i (Kula Ha’aha’a)**



**Kumu Ka’e’eonālani AhLoo** holds a Bachelor of Arts degree in Sociology and Hawaiian Studies and a Secondary Certification – Teacher Education Program from the University of Hawai’i at Hilo. Kumu Ka’e’e also holds a Masters of Education degree in Education Foundations / Leadership from the University of Hawai’i – Mānoa. Kumu Ka’e’e was Secondary Program Social Studies Kumu, pae 7-12 and is currently the Kindergarten Teacher. She has worked at ‘Aha Pūnana Leo – Hilo, Kanuikapono PCS, Kapa’a High School and other educational institutions. Kumu Ka’e’e has 5 children and 10 grandchildren. Kumu Ka’e’e is fluent in ‘Ōlelo Hawai’i and she is passionate about her Hawaiian culture.



**Kumu Uluwehi Torio** is the Kumu Alaka'i for Papa 1. She holds a Bachelor of Science degree in Early Childhood Education from the University of Nevada at Las Vegas. Kumu Uluwehi is a former student of Kula Kaiapuni o Kapa'a. She is a graduate of Kapa'a High School and is currently working on her Masters of Education degree from the University of Phoenix. Kumu has previously worked in preschools and volunteered at Kula Kaiapuni o Kapa'a. She is fluent in 'Ōlelo Hawai'i.



**Kumu Nāmomi McCorriston** was born and raised on Kaua'i and she currently works as a Kumu Alaka'i for Kawaikini's Papa 2. She has previously taught at Pūnana Leo o Kaua'i and Ke Kula Kaiapuni o Kapa'a. Kumu Nāmomi holds a BA degree in Hawaiian Studies and an Elementary Teaching License from Brigham Young University Hawai'i, where she also served as the President of the Hawaiian Club and minored in Travel Management. She is an independent representative for Primerica Financial Services and currently holds the position of Division Leader. Kumu Nāmomi is fluent in 'Ōlelo Hawai'i. She is also a member of the Kawaikini's Local School Board. She is a mother of 4 children. She is a dedicated educator with a passion for teaching Hawaiian culture and language.



**Kumu Lei Wann** is the Kumu Alaka'i for Papa 3. She holds a Bachelors in Anthropology and a Certificate of Pacific Island Studies from the University of Hawai'i at Hilo. Kumu Lei also received a Bachelors in Elementary Education from the University of Hawai'i at Mānoa. Kumu Lei has previously worked at Ho'opuka Learning Center and Kamehameha Schools. Kumu Lei has 2 keiki, one whom attends Kawaikini. Kumu Lei is fluent in 'Ōlelo Hawai'i.



**Kumu Kaliko Goo** is the Kumu Alaka'i for Papa 4. She holds a Bachelor of Arts degree in Hawaiian Studies from the University of Hawai'i at Hilo. She continued her education in the Hālau Wānana Teacher Education Program under KALO in Kamuela, HI. Kumu Kaliko is a graduate of Pāhoa High School. She has previously worked as an Education Assistant at Kua o ka Lā PCS and Kanu o ka 'Aina PCS on Hawai'i island. She was also a Kumu Kāko'o at Pūnana Leo o Hilo and has held various other jobs. She has 1 child. Kumu Kaliko is fluent in 'Ōlelo Hawai'i.



**Kumu Ānela McGerity** currently works as a Kumu Alaka'i for Kawaikini's 5-6 pae. She has previously taught at Ke Kula Kaiapuni 'o Ānuenuenu and Hilo Union Elementary prior to coming to Kaua'i. She was born and raised in Hilo, Hawai'i. She graduated from Kaiser High School. Kumu Ānela holds a Bachelor of Arts degree in Hawaiian Language from the University of Hawai'i at Mānoa in 2005. She also has a Masters of Education in Teaching – Elementary Certification with Emphasis in Hawaiian Medium Education from the University of Hawai'i at Mānoa. Kumu Ānela is a makua of 3 keiki, 2 of which are at Kawaikini. Kumu Ānela is fluent in 'Ōlelo Hawai'i.

## Nā Kumu Alakaʻi (Kula Kiʻekiʻe)



**ʻAlohilani Okamura** holds a Bachelor of Education – Social Studies degree and a Masters degree in Educational Foundations from the University of Hawaiʻi at Mānoa, and also an Ed Doctorate degree in Urban Education from University of Southern California – Rossier School of Education. She has taught in various public and private middle and high schools, including a charter school, [Kanu o ka ʻĀina](#). Kumu ʻAlohil is the Kumu ʻŌlelo Hawaiʻi as well as the Kumu Pili Kanaka (Social Studies) – Secondary Program, pae 7-12. She has previously taught English, Social Studies, Hawaiian Language and Hawaiian Studies at other educational institutions.



**Kumu Becca Stevenson** is currently the Secondary Program Language Arts Kumu, pae 7-12. She holds a B.A. in English Education, Secondary Teaching Certification from Brigham Young University. She also holds a Master of Arts degree in Anthropology – Folklore program from the University of California at Berkeley, California. Kumu Becca has taught in Utah, at Hawaiʻi Preparatory Academy and Kanu o ka ʻĀina (KALO) in Kamuela, HI, and also at the American Language Institute in Gunma, Japan. She has given many presentations at the American and Western States Folklore Society Conference on Hawaiian Slack Key Guitar, Folk Poetry Tradition, and Storytelling. Kumu Becca is learning ʻŌlelo Hawaiʻi.



**Kumu Kanani Durrant** is the current Secondary Program Science Kumu, pae 7-12. She has previously worked at Hoʻopuka Learning Center learning and Fluent in ʻŌlelo Hawaiʻi. She is a graduate of Kauaʻi High School and holds a BA degree in Hawaiian Studies and Hawaiian Language from the University of Hawaiʻi at Mānoa. Kumu Kanani is currently working on her Masters degree in Political Science and her Secondary Teaching Certification from the University of Hawaiʻi Mānoa. She is a mother of 2 children.



**Kumu Wahineuʻi Waiamau** is the current Secondary Program Mathematics Kumu, pae 7-12. She is a recent honors graduate of Concordia University- Portland, where she earned her Bachelors of Arts in Secondary Education with an endorsement in Advanced Mathematics. Kumu Waiamau is learning ʻŌlelo Hawaiʻi.

## Nā Kumu Kōkua/Kīnana (Educational Assistants/SPED)



**Kumu Kawai'olu Torio** has been a Kumu Alaka'i, Kumu Kōkua and Kumu Pani Hakahaka (substitute teacher) since 1992, beginning in Kula Kaiapuni in 1992 until the present. Kumu Kawai'olu has an Associates Degree in Specialized Business from the ICM School of Business in Pennsylvania. She graduated from Rochester High School, in Rochester, Pennsylvania. Kumu Kawai'olu has worked at various positions including being an office manager and a computer operator. Kumu Kawai'olu is known as the Singapore Math Kumu, having done many of the Math Nights at Kawaikini. She is also the mother of two children, including Kumu Uluwehi. Kumu Kawai'olu is fluent in 'Ōlelo Hawai'i.



**Kumu Kanoa Mayer** holds a Bachelor of Arts degree in Hawaiian Studies from the University of Hawai'i at Hilo. He also received an AAS degree in Hospitality and Tourism, a Hawaiian Studies Certificate and a Hawaiian Botany Program Certificate of Competence from Kaua'i Community College. Kumu Kanoa graduated from Kapa'a High School and is a Kumu Kōkua in the Elementary Program. He has previously worked at Ke Kula 'o Nāwahīokalani'ōpu'u in Kea'au, Hawai'i as well as various other places. Kumu Kanoa is fluent in 'Ōlelo Hawai'i.



**Kumu Kaleilehua Victor** is a graduate of Ke Kula Kaiapuni o Kapa'a at Kapa'a High School. She has also attended Kaua'i Community College and the University of Hawai'i at Hilo. She is currently a Kumu Kōkua in the Elementary Program. Kumu Kaleilehua has previously worked at Pūnana Leo o Hilo and Pūnana Leo o Kaua'i. Kaleilehua enjoys working with children and she is fluent in 'Ōlelo Hawai'i.



**Kumu Healani Emmick** is our Special Education teacher and Student Services Coordinator (SSC). She received her Masters of Education degree in Instructional Leadership through Chaminade University of Honolulu and holds a Bachelor of Science degree in Elementary Education from Brigham Young University-Hawai'i. Kumu Healani recently moved her family to Kaua'i from O'ahu to be closer to her 'ohana and to help farm Kalo. Two of her five children attend Kawaikini. She enjoys hearing the haumana 'Ōlelo Hawai'i on campus and is currently learning the language alongside her keiki.

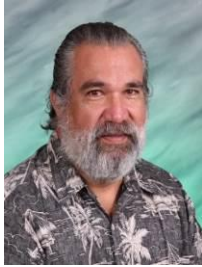
## Nā Limahana 'E A'e (Other Staff Members)



**'Anakē Ke'ala Bristol** serves as the school's Student Administrative Services Assistant (SASA). Ke'ala studied Journalism and Public Relations at Hawai'i Pacific University in Honolulu. While earning her degree, she took four semesters of Hawaiian language. Ke'ala lives in Puhi with her husband and her two keiki. She is excited to play a role in the conservation of 'Ōlelo Hawai'i and loves to hear Hawaiian language daily in the workplace!



**'Auli'i Ka'auwai Herrod** serves as Kawaikini's Office Assistant. 'Auli'i started 'Ōlelo Hawai'i in Papa Malaa'o (Kindergarten) at Ke Kula Kaiapuni o Kapa'a. She is a graduate of Kawaikini, Class of 2013. She attended Kaua'i Community College where she earned her Associates Degree in Liberal Arts and Hawaiian Studies. She is currently studying to receive her Bachelors of Arts in Humanities - Creative Media



**'Anakala George Jackson** holds a trade certificate from San Francisco City College, San Francisco, California. He is a graduate of Kahuku High School. 'Anakala George, as he is affectionately known, is the bus driver for the North Shore bus. He has his CDL license and previously worked on O'ahu for Gomes Bus Service for eight years and other transportation companies. He was also the Housing Maintenance Supervisor for eight years at Brigham Young University at Lā'ie, Hawai'i.



**Shane Cobb-Adams** currently works at the Studio K Producer at the High Tech Youth Network Studio. He has a Bachelors degree in Psychology and MA in Psychology with a focus on teaching, learning, and cognition. He is currently ABD in his Doctoral program and continues his ongoing research in the areas of Hawaiian education and leadership, technology infused project based learning, and the psychology of occupation. He has taught at the University of Hawaii at Manoa Department of Psychology, UHM college of Education, Halau Ku Mana NCPCS, and several native Hawaiian non-profits. His grant writing has brought in over \$7million in funds to support charter school education in Hawaii over the last 10 years. Shane is also a former board member of the Native Hawaiian Education Association (NHEA) and the UHM Kualii council. Shane has presented his academic work nationally and internationally and is a member of the Nga Pae O Te Maramatanga Network of International Indigenous scholars.



**Richard Chaffee** was born in Kellogg, Idaho on October 4, 1943. He worked at a grocery store since the age of thirteen. Richard attended Pacific Lutheran University, went into the Coast Guard, and managed a hardware store in Idaho owned by the family. He acquired carpentry and building skills from his father. He is a father of two children and three grandchildren. He enjoys spending time with family and attending church.

## APPENDIX C: KAWAIKINI STRIVE HI REPORT

2014 – 2015 Strive HI

### Kawaikini New Century Public Charter School



**Mission:** Through the medium of the Hawaiian language, Kawaikini New Century Public Charter School will create a supportive learning environment where indigenous cultural knowledge is valued, applied, and perpetuated.

**Board Chair:** Lei'ilima Rapozo

**Director:** Kaleimakamae Kaauiwai

**Year authorized:** 2008

3-1821J Kaumualii Highway, Lihue, HI 96766

808-632-2032

[www.kawaikini.com](http://www.kawaikini.com)

**Region:** Kauai

**DOE Complex:** Kauai

**Total enrollment:** 136

**Grades:** K-12

Elementary: K-6

Middle: 7-8

High: 9-12

**Accredited:** Yes, through 6/30/20

**Title I:** Yes

**High needs populations**

	<u>School</u>	<u>Statewide</u>
SPED:	4.4%	9.6%
FRL:	71.8%	50.9%
ELL:	N/A <sup>1</sup>	6.7%

### Academic Performance – School Year 2014-2015

#### Academic Performance Framework (APF) Hawaii State Public Charter School Commission

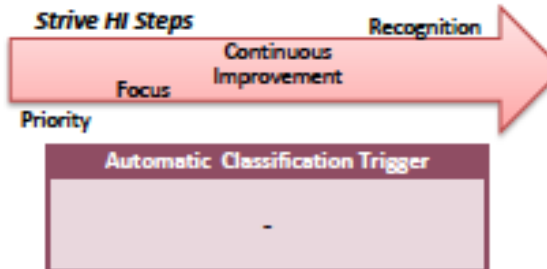
Weighted API Score (APF weight: 100%)	School-Specific Measure (APF weight: 0%)	APF Score (0-400 points)
83	N/A	83

	Elem	Middle	High
Division API	60	215	172
Enrollment	112	12	12
Weight	82%	9%	9%

<u>Acronyms</u>
DOE = Hawaii Department of Education
API = Academic performance index
SPED = Special education students
FRL = Students eligible for free and reduced-price lunch
ELL = English language learners

#### Strive HI Performance System Hawaii Department of Education

Strive HI API Score (0-400 points)	Strive HI Classification
145	Continuous Improvement





Kawaikini’s Strive HI status can be seen in the following diagram of Performance Steps:

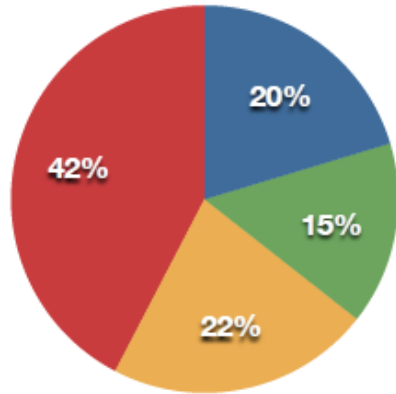


More detailed information on the Strive HI index can be found at <http://www.hawaiipublicschools.org/VisionForSuccess/AdvancingEducation/StriveHIPerformanceSystem/Pages/Strive-HI-System-Index.aspx>

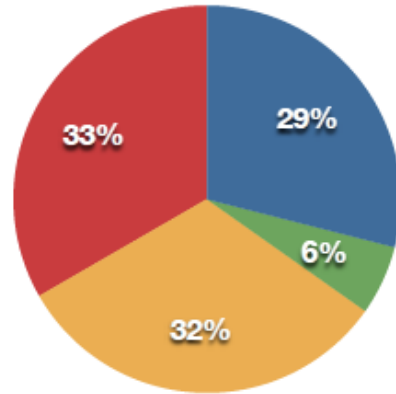
**APPENDIX D: TESTING RESULTS**

D1 - He Lawai'a

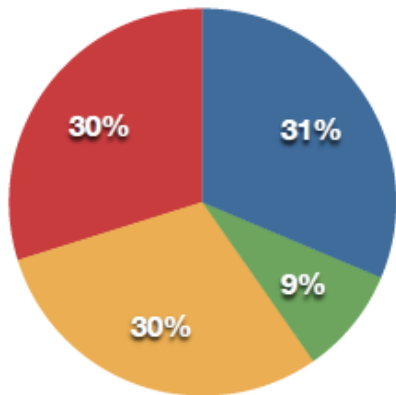
**He Lawai'a: Spring 2010**



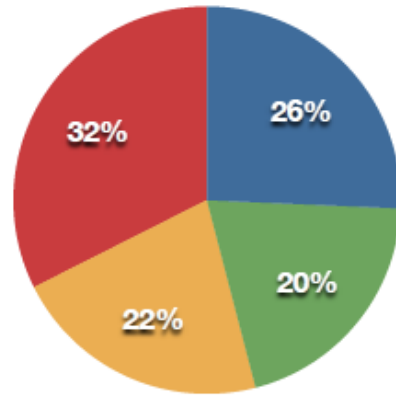
**He Lawai'a: Spring 2011**



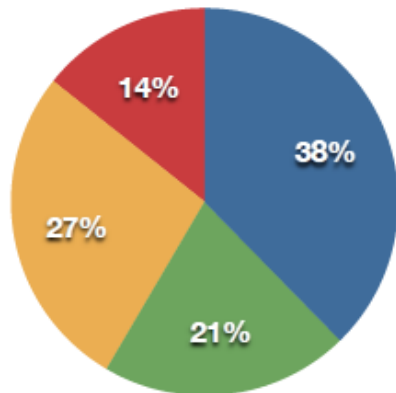
**He Lawai'a: Spring 2012**



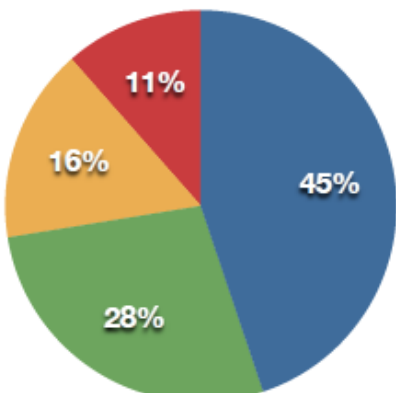
**He Lawai'a: Spring 2013**



**He Lawai'a: Spring 2014**



**He Lawai'a: Spring 2015**



● exceeds ● meets ● approaching ● below

D2 – SMARTER BALANCE ASSESSMENT

Smarter Balanced Assessment: SY 2014-2015

Grade	ELA / Literacy				Mathematics			
	<i>Below</i>	<i>Approaching</i>	<i>Meets</i>	<i>Exceeding</i>	<i>Below</i>	<i>Approaching</i>	<i>Meets</i>	<i>Exceeding</i>
<b>5</b>	90%	10%	0%	0%	80%	20%	0%	0%
<b>6</b>	43%	36%	21%	0%	54%	31%	8%	8%
<b>7</b>	63%	38%	0%	0%	63%	25%	13%	0%
<b>8</b>	33%	33%	33%	0%	67%	33%	0%	0%
<b>11</b>	0%	100%	0%	0%	100%	0%	0%	0%

## **APPENDIX E: INDEX OF COMMUNITY SUPPORT**

### **Institutional partners**

- University of Hawai'i
- Kaua'i Community College
- Supporting the Language of Kaua'i, Inc.
- Kamehameha Schools, Ho'olako Like Dept.
  - 'Aha Pūnana Leo, Inc.
  - Office of Hawaiian Affairs
    - Nā Lei Na'auao
    - Pūnana Leo o Kaua'i
- Ho'ola Lahui Hawai'i / Mālama i nā Pua
- Nā Pua No'eau Center for Gifted and Talented Native Hawaiian Children
  - Malama 'Aina Foundation

### **Other assistance provided by these Businesses and Organizations**

- Hawai'i Department of Education
- Queen Lili'uokalani Children's Center
  - Waipa Foundation
  - Limahuli Gardens
- Kaua'i County Planning Commission
  - Esaki Surveying and Mapping
- National Tropical Botanical Gardens
  - Mana Maoli
- Living Life Source Foundation
  - High Tech Youth Network
  - Meadow Gold (Jeff Iida)
- Ono Pops (Greg Askew & Candace Boxer)

### **Special Recognition**

Mahalo to the following for their service to the keiki and 'ohana of Kawaikini:

Kumu Kaulana Smith  
Kumu Leimakana Sperry  
Kumu Rebecca Cate  
Jill Kouchi  
Phyllis Vidinha

### **Supporting the Language of Kaua'i, Inc. (501c3)**

Hoku Ka'auwai, President  
Nolan Rapozo, Vice President  
Roxanne Apana, Treasurer  
Leilani Spencer, Secretary  
Kimo Perry, Board Member  
Ezra Kanoho, Board Member  
Mele Cachero-Wimbish, Board Member  
Lea Kaiaokamalie, Board Member



## **APPENDIX F: 2014-2015 AUDIT REPORT**

[Included here is the most recent Financial Audit Report for the 2014-2015 fiscal year including the Management Discussion and Analysis. The full audit report may be viewed online at [www.kawaikini.com](http://www.kawaikini.com).]

---

J<sup>ay</sup> M<sub>iyaki</sub>, CPA, LLC

---

**KAWAIKINI  
NEW CENTURY  
PUBLIC  
CHARTER  
SCHOOL**

---

Audited Financial Statements  
as of and for the Years Ended  
June 30, 2015 and 2014  
and Independent Auditor's Reports

---

**KAWAIKINI NEW CENTURY PUBLIC CHARTER SCHOOL**

**TABLE OF CONTENTS**

**For the Years Ended June 30, 2015 and 2014**

<u>SECTION</u>	<u>PAGE</u>
TABLE OF CONTENTS	1
FINANCIAL AUDIT REPORT	
• Independent Auditor’s Report	3
MANAGEMENT DISCUSSION AND ANALYSIS	6
FINANCIAL STATEMENTS AND NOTES TO FINANCIAL STATEMENTS:	
• Statements of Net Position	11
• Statements of Revenue and Expenses and Changes in Fund Net Position	12
• Statements of Cash Flows	13
• Notes to Financial Statements	14
REPORT REQUIRED BY GAO <i>GOVERNMENT AUDITING STANDARDS</i>	
• Report on Internal Control over Financial Reporting and on Compliance and Other Matters Based on an Audit of Financial Statements Performed in Accordance with <i>Government Auditing Standards</i>	19
FINDINGS AND QUESTIONED COSTS	
• Current Year Findings and Questioned Costs	22
• Prior Year Findings and Questioned Costs	N/A

**KAWAIKINI NEW CENTURY PUBLIC CHARTER SCHOOL**  
**INDEPENDENT AUDITOR'S REPORT**  
**For the Years Ended June 30, 2015 and 2014**



## INDEPENDENT AUDITOR'S REPORT

To the Governing Board of Kawaikini and Management of New Century Public Charter School:

We have audited the accompanying financial statements of the governmental activities, the business-type activities, each major fund, and the aggregate remaining fund information of Kawaikini New Century Public Charter School (a State of Hawaii Public Charter School), as of and for the years ended June 30, 2015 and 2014, and the related notes to the financial statements, which collectively comprise the School's basic financial statements as listed in the table of contents.

### *Management's Responsibility for the Financial Statements*

Management is responsible for the preparation and fair presentation of these financial statements in accordance with accounting principles generally accepted in the United States of America; this includes the design, implementation, and maintenance of internal control relevant to the preparation and fair presentation of financial statements that are free from material misstatement, whether due to fraud or error.

### *Auditor's Responsibility*

Our responsibility is to express opinions on these financial statements based on our audits. We conducted our audits in accordance with auditing standards generally accepted in the United States of America and the standards applicable to financial audits contained in Government Auditing Standards, issued by the Comptroller General of the United States. Those standards require that we plan and perform the audits to obtain reasonable assurance about whether the financial statements are free from material misstatement.

An audit involves performing procedures to obtain audit evidence about the amounts and disclosures in the financial statements. The procedures selected depend on the auditor's judgment, including the assessment of the risks of material misstatement of the financial statements, whether due to fraud or error. In making those risk assessments, the auditor considers internal control relevant to the entity's preparation and fair presentation of the financial statements in order to design audit procedures that are appropriate in the circumstances, but not for the purpose of expressing an opinion on the effectiveness of the entity's internal control. Accordingly, we express no such opinion. An audit also includes evaluating the appropriateness of accounting policies used and the reasonableness of significant accounting estimates made by management, as well as evaluating the overall presentation of the financial statements.

We believe that the audit evidence we have obtained is sufficient and appropriate to provide a basis for our audit opinions.

### *Basis for Qualified Opinion on Supporting the Language of Kauai, Inc.*

The financial statements of Supporting the Language of Kauai, Inc. have not been audited, and we were not engaged to audit the Supporting the Language of Kauai, Inc.'s financial statements as part of our audit of Kawaikini New Century Public Charter School's basic financial statements. Supporting the Language of Kauai, Inc.'s financial activities are included in Kawaikini New Century Public Charter School's, basic financial statements as a discretely presented component unit.

***Qualified Opinion on Supporting the Language of Kauai, Inc.***

In our opinion, except for the possible effects of the matter discussed in the “Basis for Qualified Opinion on Supporting the Language of Kauai, Inc.” paragraph, the financial statements referred to above present fairly, in all material respects, the financial position of the discretely presented component unit for Kawaikini New Century Public Charter School, as of June 30, 2015 and 2014, and the changes in financial position thereof for the years then ended in accordance with accounting principles generally accepted in the United States of America.

***Unmodified Opinion***

In our opinion, the financial statements referred to above present fairly, in all material respects, the respective financial position of the governmental activities, the business-type activities, each major fund, and the aggregate remaining fund information of Kawaikini New Century Public Charter School, as of June 30, 2015 and 2014, and the respective changes in financial position and, where applicable, cash flows thereof for the years then ended in accordance with accounting principles generally accepted in the United States of America.

***Other Matters – Required Supplementary Information***

Accounting principles generally accepted in the United States of America require that the management’s discussion and analysis information on pages six (6) through nine (9) be presented to supplement the basic financial statements. Such information, although not a part of the basic financial statements, is required by the Governmental Accounting Standards Board, who considers it to be an essential part of financial reporting for placing the basic financial statements in an appropriate operational, economic, or historical context. We have applied certain limited procedures to the required supplementary information in accordance with auditing standards generally accepted in the United States of America, which consisted of inquiries of management about the methods of preparing the information and comparing the information for consistency with management’s responses to our inquiries, the basic financial statements, and other knowledge we obtained during our audit of the basic financial statements. We do not express an opinion or provide any assurance on the information because the limited procedures do not provide us with sufficient evidence to express an opinion or provide any assurance.

***Other Reporting Required by Government Auditing Standards***

In accordance with *Government Auditing Standards*, we have also issued our report dated October 29, 2015 on our consideration of the Kawaikini New Century Public Charter School’s internal control over financial reporting and on our tests of its compliance with certain provisions of laws, regulations, contracts, and grant agreements and other matters. The purpose of that report is to describe the scope of our testing of internal control over financial reporting and compliance and the results of that testing, and not to provide an opinion on internal control over financial reporting or on compliance. That report is an integral part of an audit performed in accordance with *Government Auditing Standards* in considering Kawaikini New Century Public Charter School’s internal control over financial reporting and compliance.



Honolulu, Hawaii  
October 29, 2015

**KAWAIKINI NEW CENTURY PUBLIC CHARTER SCHOOL**  
**MANAGEMENT DISCUSSION AND ANALYSIS**  
**For the Years Ended June 30, 2015 and 2014**

# KAWAIKINI NEW CENTURY PUBLIC CHARTER SCHOOL

## MANAGEMENT DISCUSSION AND ANALYSIS

### For the Years Ended June 30, 2015 and 2014

The following discussion and analysis of the financial performance of Kawaikini New Century Public Charter School provides an overview of the School's financial activities for the fiscal years ended June 30, 2015 and 2014. Please read it in conjunction with the School's financial statements and the related notes to the financial statements.

#### **The School as a Whole**

Kawaikini New Century Public Charter School was approved by the Hawaii State Board of Education and received its charter on July 10, 2008. During the fiscal year ended June 30, 2015, the School operated grade levels kindergarten through grade twelve in Lihue, on the Island of Kauai, Hawaii. Enrollment consisted of a total of 137 students. Following are additional information.

- Kawaikini has begun its first year of the 6 year Accreditation from the Western Association of Schools and Colleges, which was a collaboration of all teachers, staff, parents, students and community members. We have now begun working on the Action Plan, which includes (1) developing a scope and sequence for each core subject align it with Kawaikini's Ola Pono, Manokalanipo and Ke Ala `Ike curriculum strands , (2) develop a system of formative and summative assessments that are aligned with Expected School-wide Learning Results and curriculum scope and sequence, (3) to create and implement a development plan to diversify funding sources beyond state per pupil allocations, (4) create an enrollment sustainability plan, and (5) define and clarify the leadership structure that best supports the school into the future.
- Kawaikini was ranked 7<sup>th</sup> out of 67 high schools statewide and at a 90<sup>th</sup> percentile. This ranking is based on an average score of 253 from the last 3 years of Strive Hi and HSA Academic Performance Indicators and the Charter School Academic Performance Framework combined. In the proposed Charter School Renewal Contract, Kawaikini would be in Bracket 1, which allows a 4-5 year contract.
- Kawaikini, in partnership with High Tech Youth Network and Supporting the Language of Kaua`i, celebrated the opening of Studio K, a venue for youth to work alongside adult mentors on creative and exciting projects which involve information Technology. This is an opportunity to learn and advance their creative skills and capacity. Some examples of this work include:
  - Graphic design (creating and editing images with software used by professional designers)
  - Designing and making web pages, apps, and video games (members have the opportunity to learn about programming and designing for the internet or software for devices such as tablets)
  - Video and Music Production
  - Working on creating their own movies, using computer software to put together a sequence of photos, vide clips and sound files to make a digital movie
- Studio K is the second of several studios in Hawai`i, including Waimea High School and Kapaa High School on Kaua`i, and at Connections School in Hilo, Hawai`i.
- Mana Mele Mentorship Afterschool program begins at Kawaikini, which allows students in grades 5 and above to learn and or expand their musical skills and abilities. This mentorship also exposes students to the business, as well as creative side of music and the entertainment industry.
- Kawaikini's students were invited to sing at the inauguration services for Kauai's Mayor, Bernard Carvalho. Mayor Carvalho has visited Kawaikini previously.

## MANAGEMENT DISCUSSION AND ANALYSIS (continued)

- Kawaikini's Secondary Academic Conference occurs in the final month of each semester, December and May, of each year. This is an opportunity for students to share what they have learned before an audience, including their parents. This year, the elementary students were also invited to participate.
- Kawaikini is Asbestos Free. During summer 2015, Kawaikini engaged a local company to remove asbestos, which was contained in two small closets.
- During the summer of 2014, Kawaikini was blessed to partner with 'Aha Hula Halaua Ola, the World Hula Conference. This hula conference occurs every four years. Kawaikini provided facilities, along with Island School and Kaua'i Community College.

### **Using This Annual Report**

This annual report consists of a series of financial statements. In accordance with *Government Accounting Standards Board pronouncements*, the School is considered a special-purpose government engaged in governmental activities and business-type activities and issues a Statement of Net Position, a Statement of Revenues, Expenses and Changes in Fund Net Position, a Statement of Cash Flows and the related notes to the financial statements, which collectively comprise the School's basic financial statements as listed in the table of contents. These statements provide information about the financial activities of the School as a whole. The Governing Board reviews and approves the annual school budget; however, a budgetary comparison is not included as a supplementary schedule because it is not required.

### **Financial Statements**

The financial statements are designed to provide readers with a broad overview of the School's finances, in a manner similar to that employed by a private-sector business.

The *Statement of Net Position* presents information on all of the School's assets, deferred outflows of resources, liabilities and deferred inflows of resources, with the difference reported as net position. Over time, increases or decreases in net position may serve as an indicator of whether the financial position of the School is improving or deteriorating.

The *Statement of Revenue, Expenses and Changes in Fund Net Position* present information on revenues and expenses of the School and the changes in fund net position. All changes in fund net position are reported as soon as the underlying event giving rise to the change occurs, regardless of the timing of the cash flows.

The *Statement of Cash Flows* presents information about the School's cash receipts and disbursements that affect the change in the School's cash balance by categorizing cash activities into operating, investing and financing activities.

The *Notes to the Financial Statements* provides additional information that is essential to a full understanding of the data provided in the School's financial statements. The notes to the financial statements can be found on the pages following the financial statements.

## MANAGEMENT DISCUSSION AND ANALYSIS (continued)

### Financial Highlights

For the year ended June 30, 2015:

- The School reported net position of \$1,386,523 comprising cash of \$33,596, other assets of \$175,058, and property and equipment of \$1,307,519 less liabilities of \$129,650.
- The School reported an operating loss of \$70,755 from operating revenues of \$1,468,165 less operating expenses of \$1,538,920.
- Per-pupil funding was approximately \$850,903, which represented approximately 58% of total operating revenues.
- Salaries, wages and payroll taxes of \$1,059,621 represented approximately 69% of total operating expenses.

### Net Position

The following provides a summary of the School's net position as of June 30, 2015 and 2014.

	<u>2015</u>	<u>2014</u>	<u>Increase (Decrease)</u>
Assets	\$1,516,173	\$1,608,291	\$(92,118)
Liabilities	\$ 129,650	\$ 151,013	\$(21,363)
Total net position	\$1,386,523	\$1,457,278	\$(70,755)

The decrease in assets in fiscal year 2015 resulted in the School's decrease in net position, primarily due to operating expenses exceeding operating income. Over time, net position can serve as a useful indicator of the School's financial position.

### Changes in Net Position

The following provides a summary of the School's revenues, expenses and changes in net position as of June 30, 2015 and 2014.

	<u>2015</u>	<u>2014</u>	<u>Increase (Decrease)</u>
<b><u>Revenues</u></b>			
Per pupil allocation	\$ 850,903	\$ 708,823	\$142,080
Grants passed through from			
Supporting the Language of Kauai Inc.	226,472	337,177	(110,705)
Federal and other grants	169,087	117,638	51,449
Other income	<u>221,703</u>	<u>89,117</u>	<u>132,586</u>
Total revenues	<u>1,468,165</u>	<u>1,252,755</u>	<u>215,410</u>
<b><u>Expenses</u></b>			
Salaries, wages and payroll expenses	1,059,621	1,033,411	26,210
Other expenses	<u>479,299</u>	<u>493,176</u>	<u>(13,877)</u>
Total expenses	<u>1,538,920</u>	<u>1,526,587</u>	<u>12,333</u>
Increase (decrease) in net position	\$ <u>(70,755)</u>	\$ <u>(273,832)</u>	\$ <u>203,077</u>

## MANAGEMENT DISCUSSION AND ANALYSIS (continued)

### Net Investment in Capital Assets Component of Net Position

The following provides a summary of the School's net investment in capital assets component of net position as of June 30, 2015 and 2014.

	<u>2015</u>	<u>2014</u>	Increase (Decrease)
Buildings and improvements	\$1,356,679	\$1,356,679	\$ -
Vehicles	118,072	118,072	-
Furniture and fixtures	67,514	52,679	14,835
Office and computer equipment	105,330	57,212	48,118
Accumulated depreciation	<u>(340,076)</u>	<u>(220,465)</u>	<u>(119,611)</u>
Capital assets – net	<u>\$1,307,519</u>	<u>\$1,364,177</u>	<u>\$ (56,658)</u>

The overall decrease in capital assets is due to depreciation expense exceeding capital asset additions during fiscal year 2015.

### Contacting the School's Management

This report is designed to provide a general overview of the School's finances and to show the School's accountability for the money it receives. If there are any questions about this report or additional financial information is needed, please contact the School.